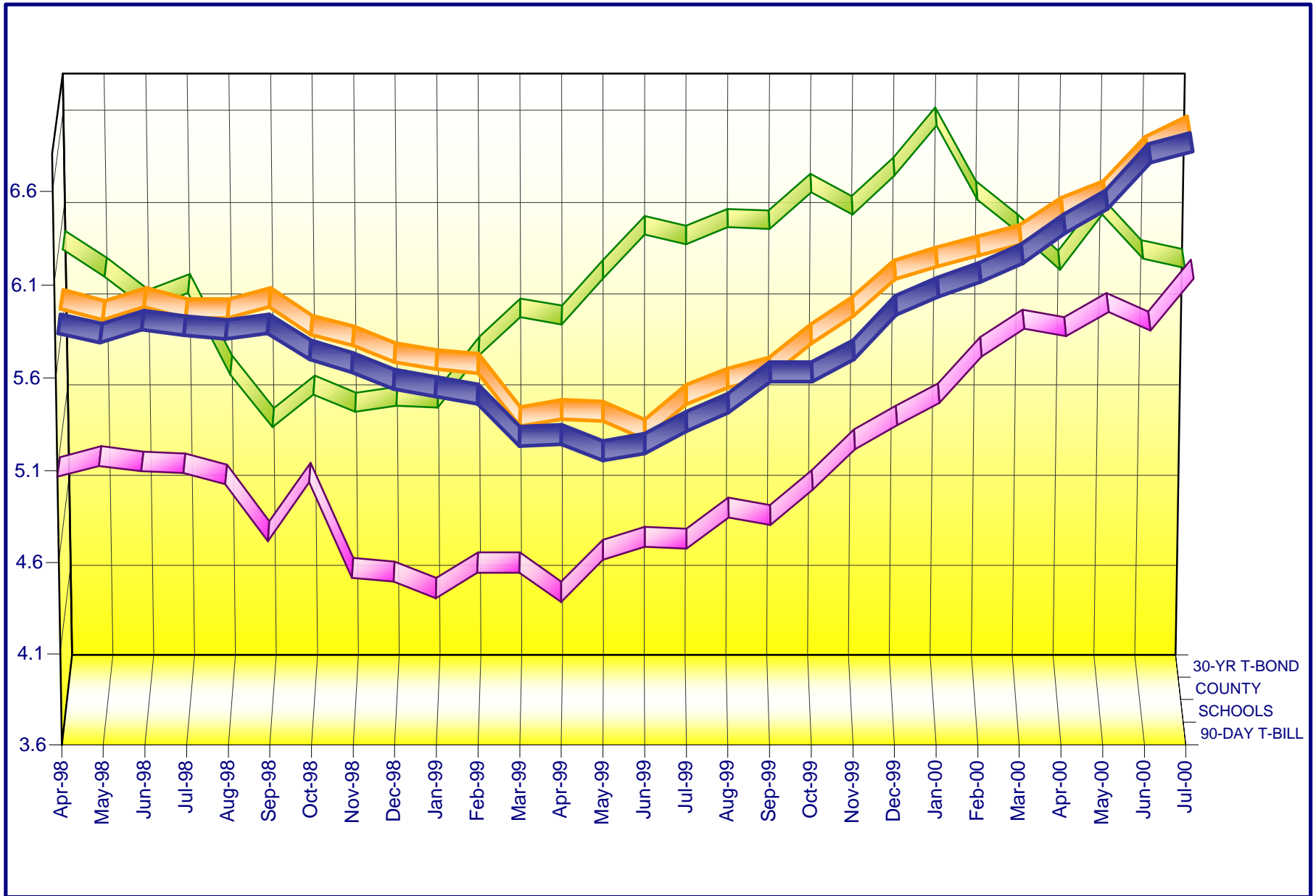


ORANGE COUNTY MONEY MARKET POOLS vs BENCHMARKS (GROSS)

For The Period April, 1998 to July, 2000



90-DAY T-BILL

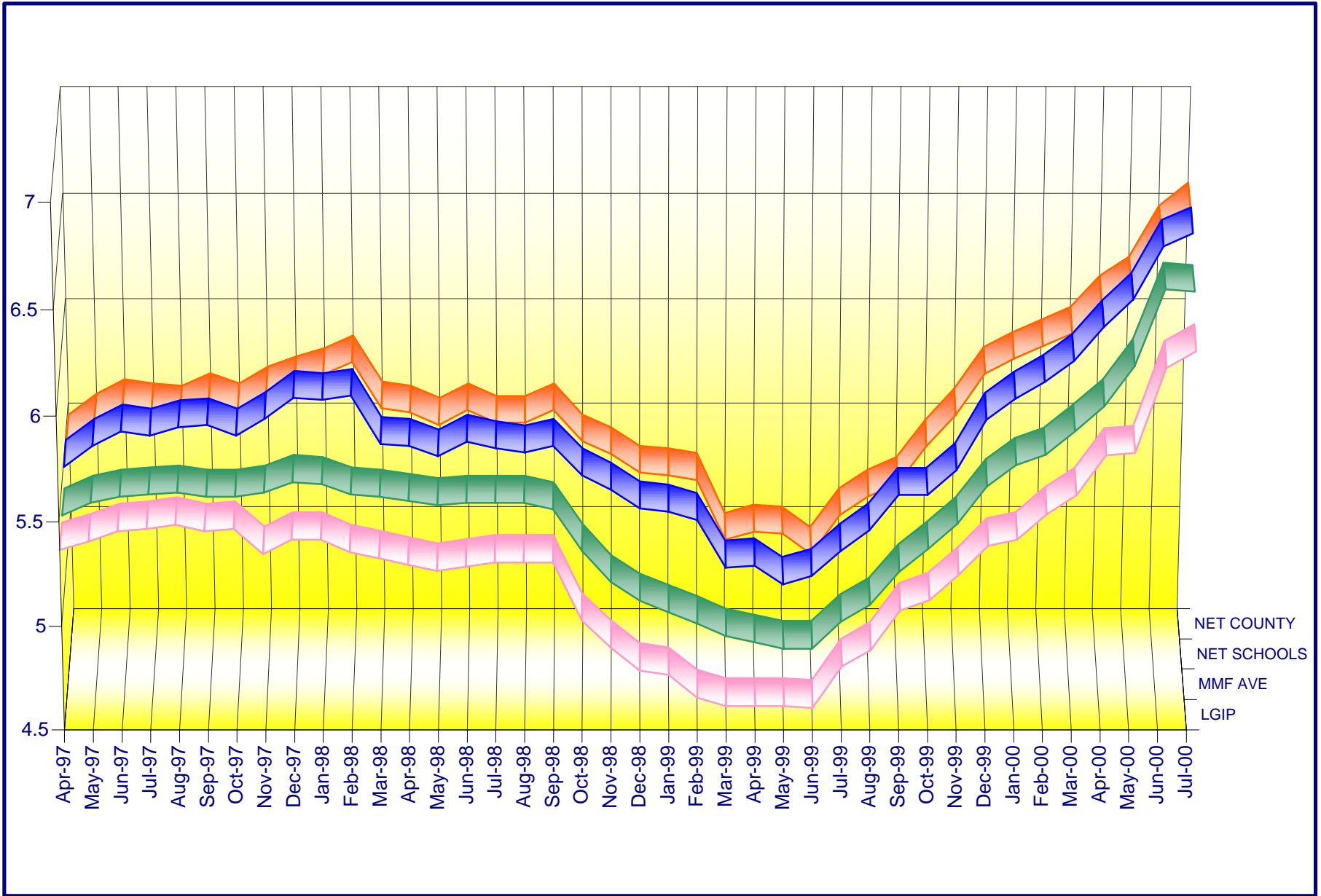
SCHOOLS

COUNTY

30-YR T-BOND

ORANGE COUNTY MONEY MARKET POOLS vs BENCHMARKS (NET)

For The Period April, 1997 to July, 2000



■ LGIP

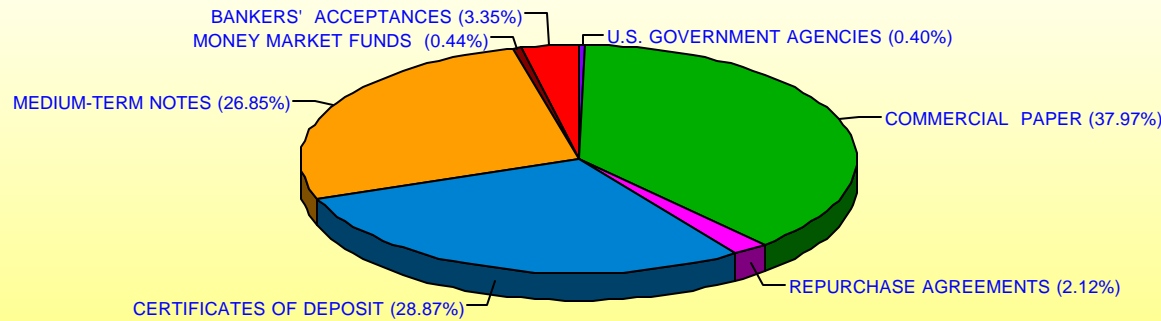
■ MMF AVE

■ NET SCHOOLS

■ NET COUNTY

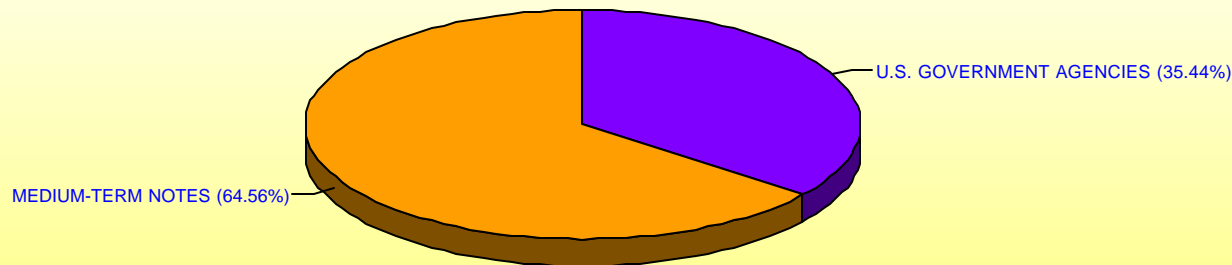
**ORANGE COUNTY TREASURER - TAX COLLECTOR
ORANGE COUNTY INVESTMENT POOL
PORTFOLIO COMPOSITION - BY FUND**
July 31, 2000**

MONEY MARKET FUND



	In Thousands
U.S. GOVERNMENT AGENCIES	\$7,460
COMMERCIAL PAPER	715,096
REPURCHASE AGREEMENTS	40,000
CERTIFICATES OF DEPOSIT	543,875
MEDIUM-TERM NOTES	505,708
MONEY MARKET FUNDS	8,317
BANKERS' ACCEPTANCES	<u>63,126</u>
TOTAL	<u>\$1,883,582</u>

EXTENDED FUND

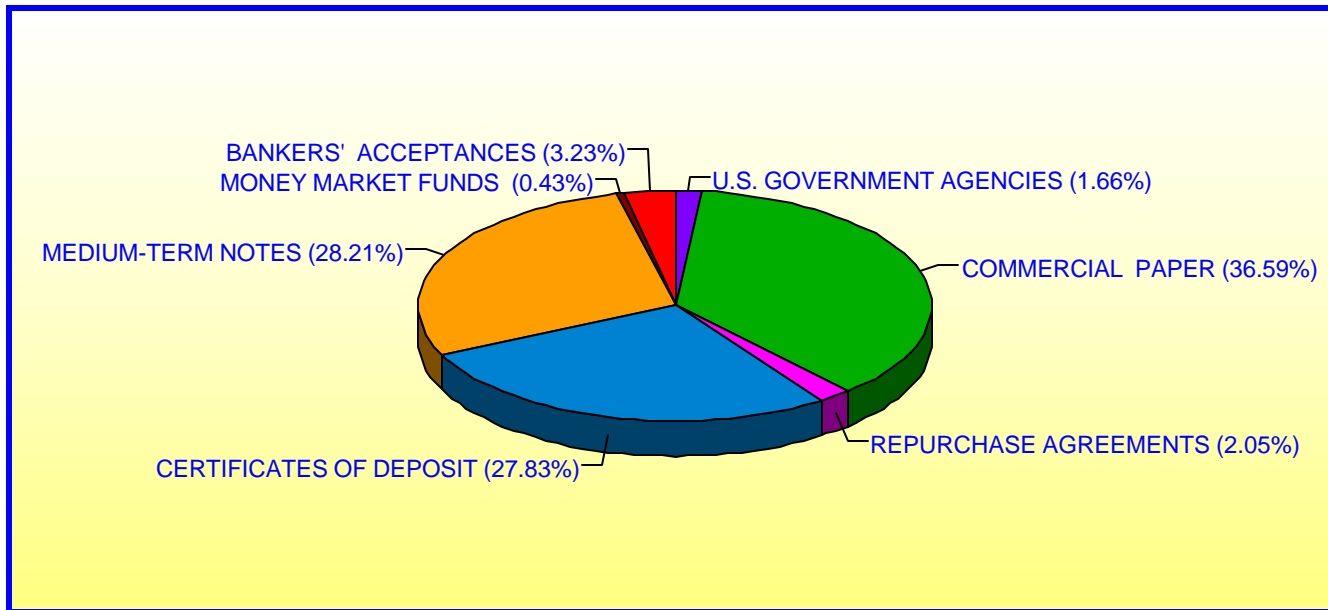


	In Thousands
U.S. GOVERNMENT AGENCIES	\$25,004
MEDIUM TERM NOTES	<u>45,546</u>
TOTAL	<u>\$70,550</u>

Investment Composition Is In Compliance With The Orange County Treasurer's Investment Policy Statement

** Calculated Based Upon Market Value at 07/31/00

ORANGE COUNTY TREASURER - TAX COLLECTOR
ORANGE COUNTY INVESTMENT POOL
PORTFOLIO COMPOSITION - COMBINED **
July 31, 2000

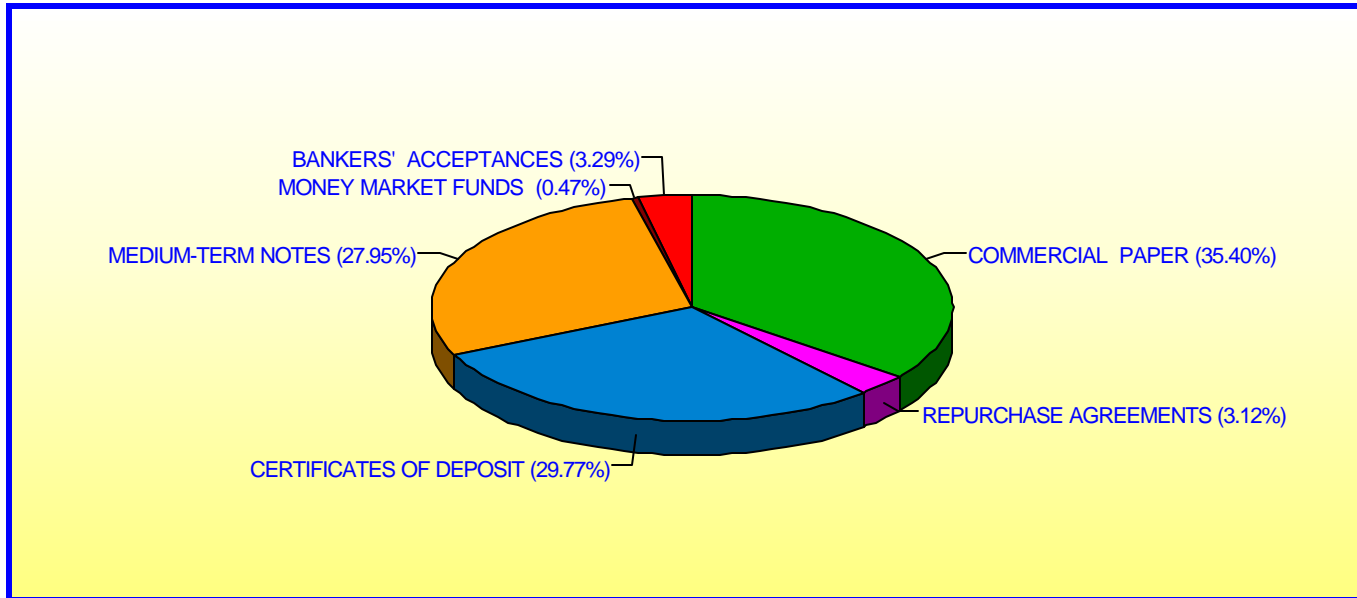


	In Thousands
U.S. GOVERNMENT AGENCIES	\$32,464
COMMERCIAL PAPER	715,096
REPURCHASE AGREEMENTS	40,000
CERTIFICATES OF DEPOSIT	543,875
MEDIUM-TERM NOTES	551,254
MONEY MARKET FUNDS	8,317
BANKERS' ACCEPTANCES	63,126
TOTAL	<u>\$1,954,132</u>

Investment Composition Is In Compliance With The Orange County Treasurer's Investment Policy Statement

**** Calculated Based Upon Market Value at 07/31/00**

ORANGE COUNTY TREASURER - TAX COLLECTOR
ORANGE COUNTY EDUCATIONAL INVESTMENT POOL
PORTFOLIO COMPOSITION **
July 31, 2000



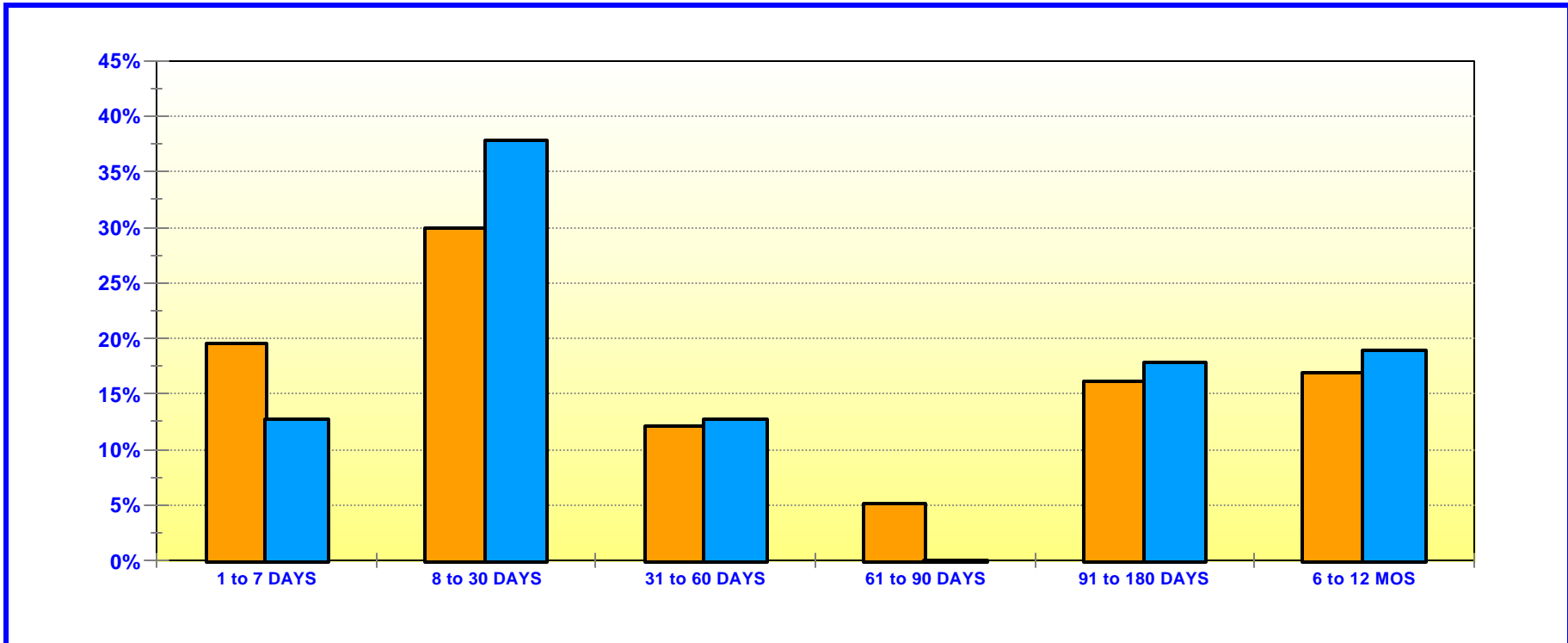
	In Thousands
COMMERCIAL PAPER	\$396,711
REPURCHASE AGREEMENTS	35,000
CERTIFICATES OF DEPOSIT	333,571
MEDIUM-TERM NOTES	313,232
MONEY MARKET FUNDS	5,310
BANKERS' ACCEPTANCES	<u>36,836</u>
TOTAL	<u>\$1,120,660</u>

Investment Composition Is In Compliance With The Orange County Treasurer's Investment Policy Statement

***** Calculated Based Upon Market Value at 07/31/00***

ORANGE COUNTY TREASURER - TAX COLLECTOR
ORANGE COUNTY MONEY MARKET FUND AND EDUCATIONAL INVESTMENT POOL
MATURITIES DISTRIBUTION AT COST

July 31, 2000



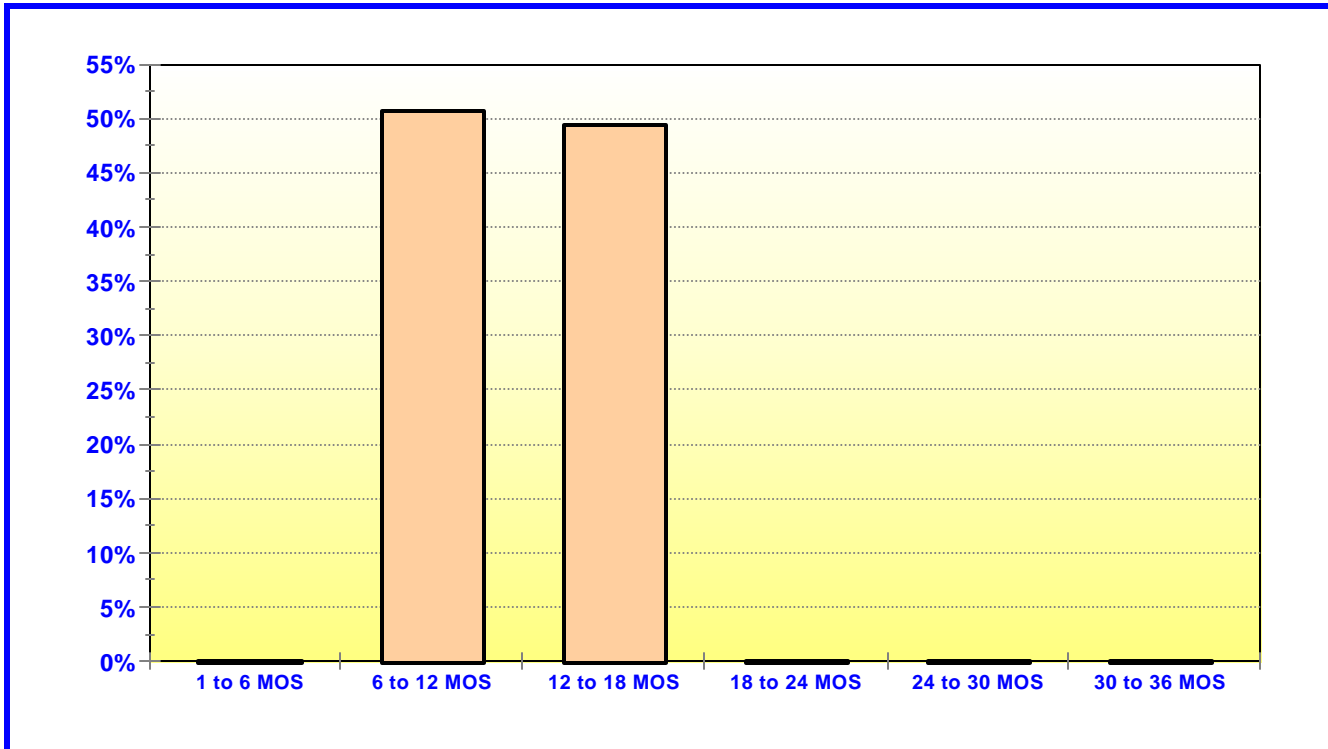
O.C. INVESTMENT POOL MONEY MARKET FUND		
	In Thousands	%
1 TO 7 DAYS	\$369,254	19.61%
8 TO 30 DAYS	564,571	29.98%
31 TO 60 DAYS	229,797	12.20%
61 TO 90 DAYS	97,860	5.20%
91 TO 180 DAYS	303,211	16.10%
6 TO 12 MOS	318,570	16.91%
TOTAL	\$1,883,263	100.00%

O.C. EDUCATIONAL INVESTMENT POOL		
	In Thousands	%
1 TO 7 DAYS	\$142,202	12.69%
8 TO 30 DAYS	423,554	37.81%
31 TO 60 DAYS	141,962	12.67%
61 TO 90 DAYS	0	0.00%
91 TO 180 DAYS	200,317	17.88%
6 TO 12 MOS	212,341	18.95%
TOTAL	\$1,120,376	100.00%

Maturity Limits Are In Compliance With The Orange County Treasurer's Investment Policy Statement

Floating Rate Notes are deemed to have a maturity date equal to their next interest reset date.
 At July 31, 2000, Floating Rate Notes comprise 7.17% and 6.96% of the O.C. Money Market Fund and Educational Investment Pool, respectively.

ORANGE COUNTY TREASURER - TAX COLLECTOR
ORANGE COUNTY INVESTMENT POOL - EXTENDED FUND
MATURITIES DISTRIBUTION AT COST
July 31, 2000

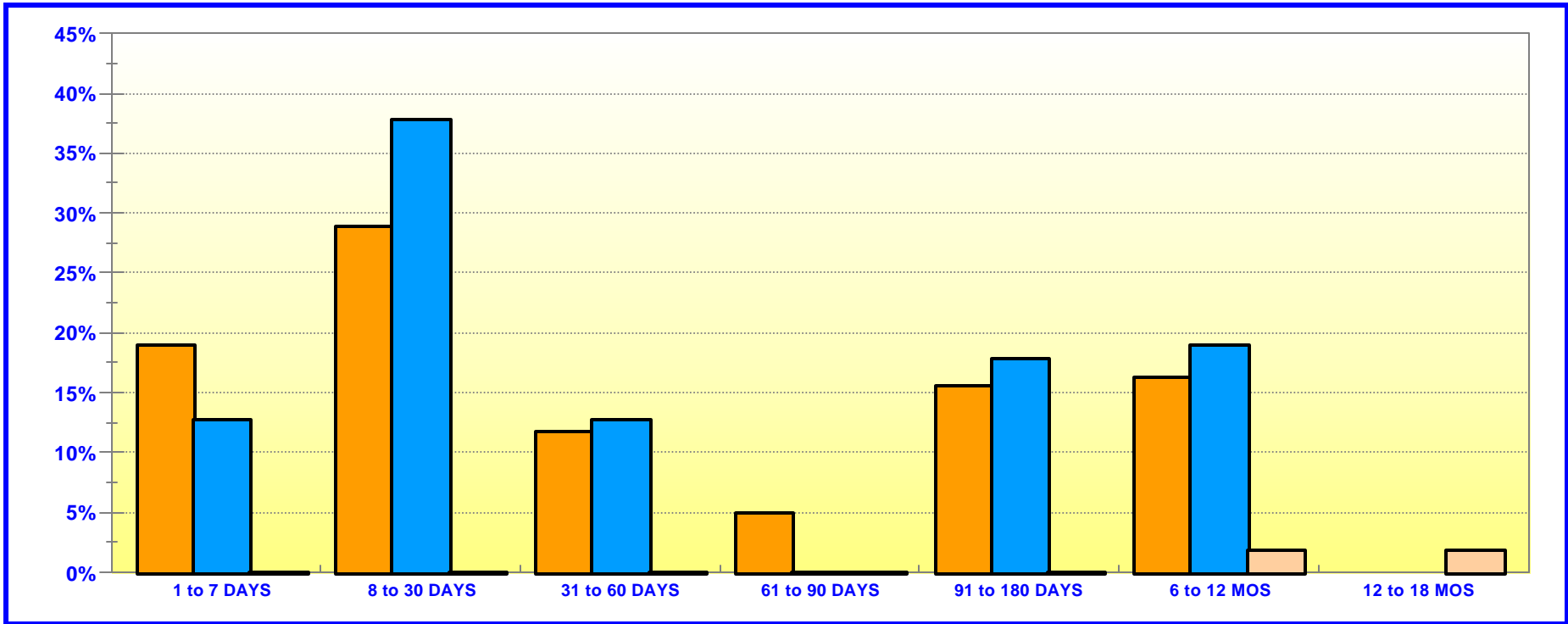


O.C. INVESTMENT POOL EXTENDED FUND		
	In Thousands	%
6 TO 12 MOS	\$35,769	50.70%
12 TO 18 MOS	<u>34,781</u>	<u>49.30%</u>
TOTAL	<u>\$70,550</u>	<u>100.00%</u>

Maturity Limits Are In Compliance With The Orange County Treasurer's Investment Policy Statement

ORANGE COUNTY TREASURER - TAX COLLECTOR
ORANGE COUNTY AND EDUCATIONAL INVESTMENT POOLS
MATURITIES DISTRIBUTION AT COST

July 31, 2000



O.C. INVESTMENT POOL				
			In Thousands	%
	Money Market Fund	1 TO 7 DAYS	\$369,254	18.90%
	Money Market Fund	8 TO 30 DAYS	564,571	28.90%
	Money Market Fund	31 TO 60 DAYS	229,798	11.76%
	Money Market Fund	61 TO 90 DAYS	97,860	5.01%
	Money Market Fund	91 TO 180 DAYS	303,211	15.52%
	Money Market Fund	6 TO 12 MOS	318,570	16.30%
	Extended Fund	6 TO 12 MOS	35,769	1.83%
	Extended Fund	12 TO 18 MOS	34,780	1.78%
TOTAL			<u>\$1,953,813</u>	<u>100.00%</u>

O.C. EDUCATIONAL INVESTMENT POOL		
		%
	In Thousands	
1 TO 7 DAYS	\$142,202	12.69%
8 TO 30 DAYS	423,554	37.81%
31 TO 60 DAYS	141,962	12.67%
61 TO 90 DAYS	0	0.00%
91 TO 180 DAYS	200,317	17.88%
6 TO 12 MOS	212,341	18.95%
TOTAL		<u>\$1,120,376</u> <u>100.00%</u>

Maturity Limits Are In Compliance With The Orange County Treasurer's Investment Policy Statement

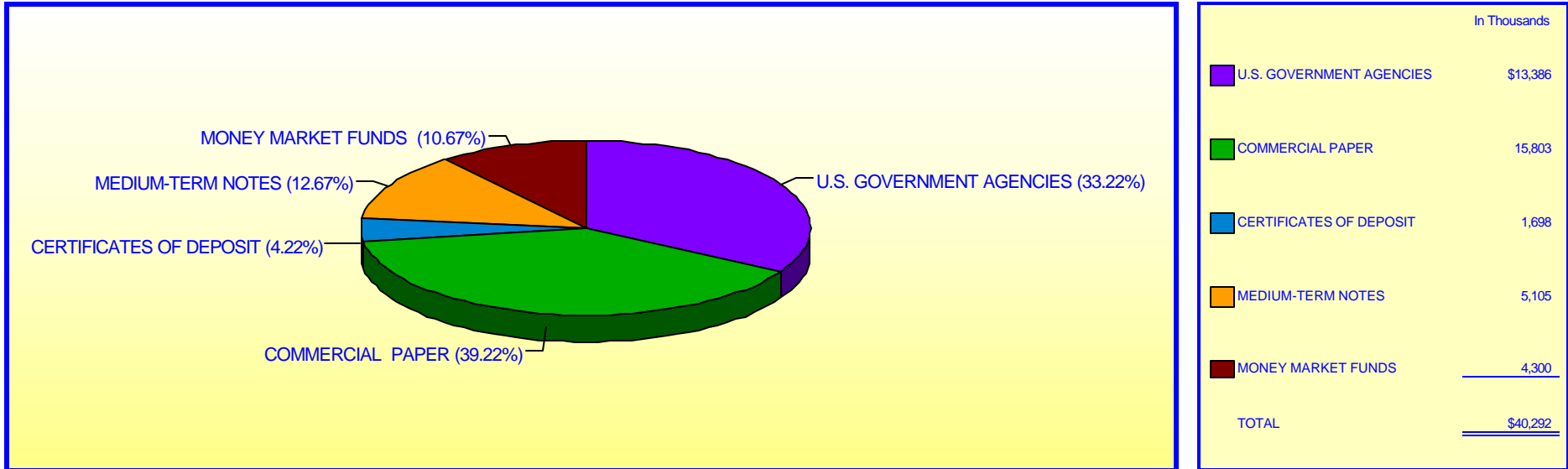
Floating Rate Notes are deemed to have a maturity date equal to their next interest reset date.
 At July 31, 2000, Floating Rate Notes comprise 7.17% and 6.96% of the O.C. Money Market Fund and Educational Investment Pool, respectively.

ORANGE COUNTY TREASURER - TAX COLLECTOR

JOHN WAYNE AIRPORT INVESTMENT POOL

PORTFOLIO COMPOSITION **

July 31, 2000



Investment Composition Is In Compliance With The Orange County Treasurer's Investment Policy Statement

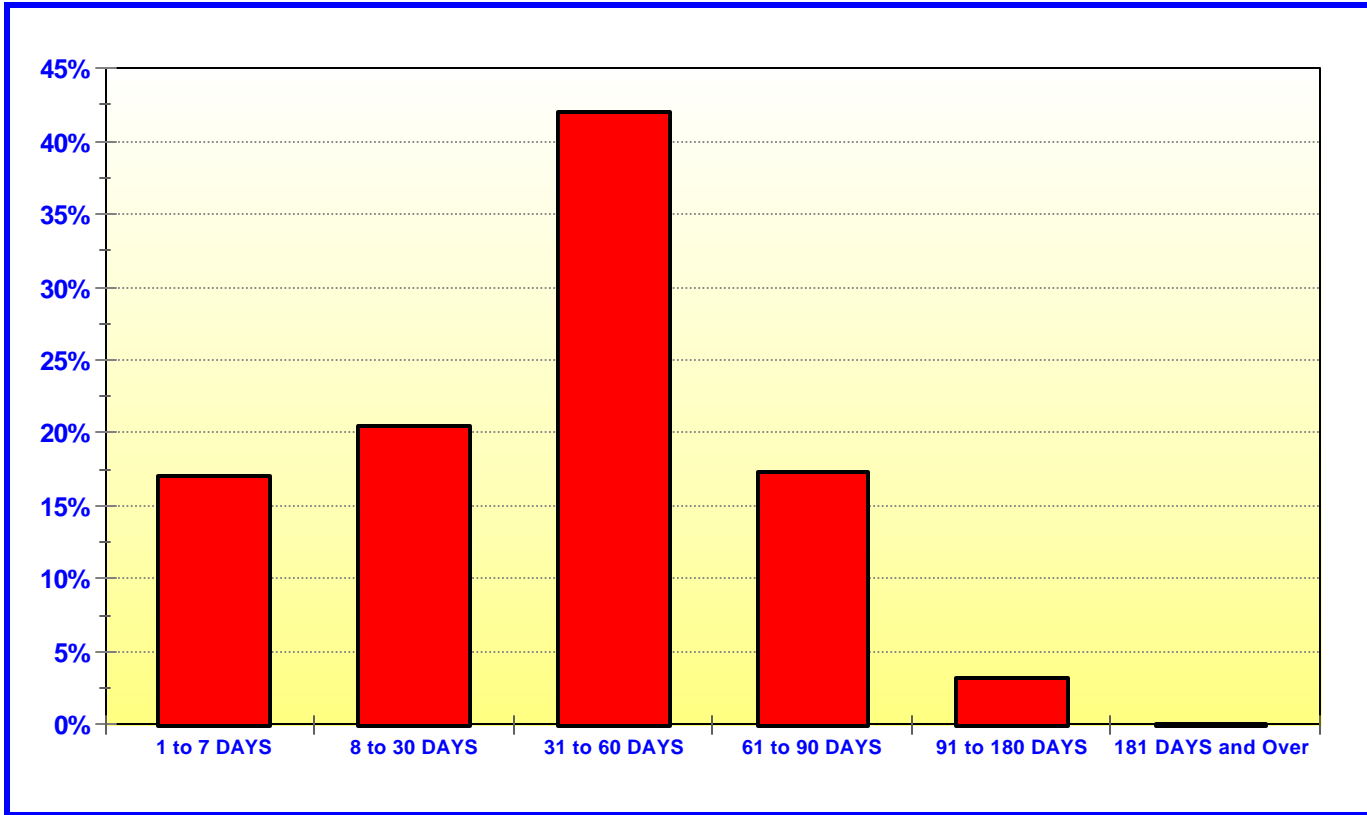
**** Calculated Based Upon Market Value at 07/31/00**

ORANGE COUNTY TREASURER - TAX COLLECTOR

JOHN WAYNE AIRPORT INVESTMENT POOL

MATURITIES DISTRIBUTION AT COST

July 31, 2000



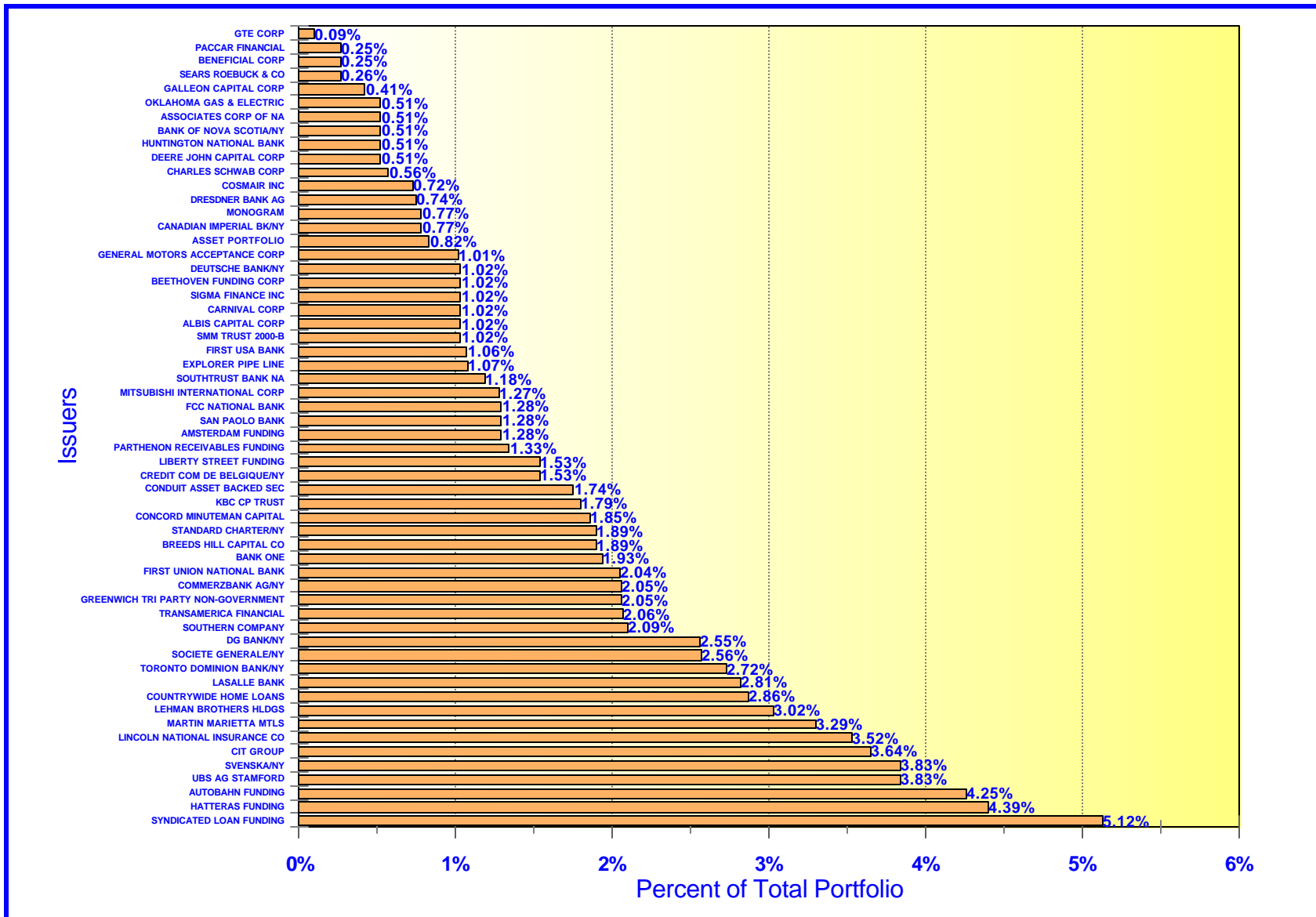
JOHN WAYNE AIRPORT		
	In Thousands	%
1 TO 7 DAYS	\$6,845	16.98%
8 TO 30 DAYS	8,248	20.47%
31 TO 60 DAYS	16,936	42.02%
61 TO 90 DAYS	7,001	17.37%
91 TO 180 DAYS	1,273	3.16%
181 DAYS and Over	<u>0</u>	<u>0.00%</u>
TOTAL	<u>\$40,303</u>	<u>100.00%</u>

Maturity Limits Are In Compliance With The Orange County Treasurer's Investment Policy Statement

ORANGE COUNTY TREASURER - TAX COLLECTOR

ORANGE COUNTY INVESTMENT POOL - ISSUER CONCENTRATION

July 31, 2000

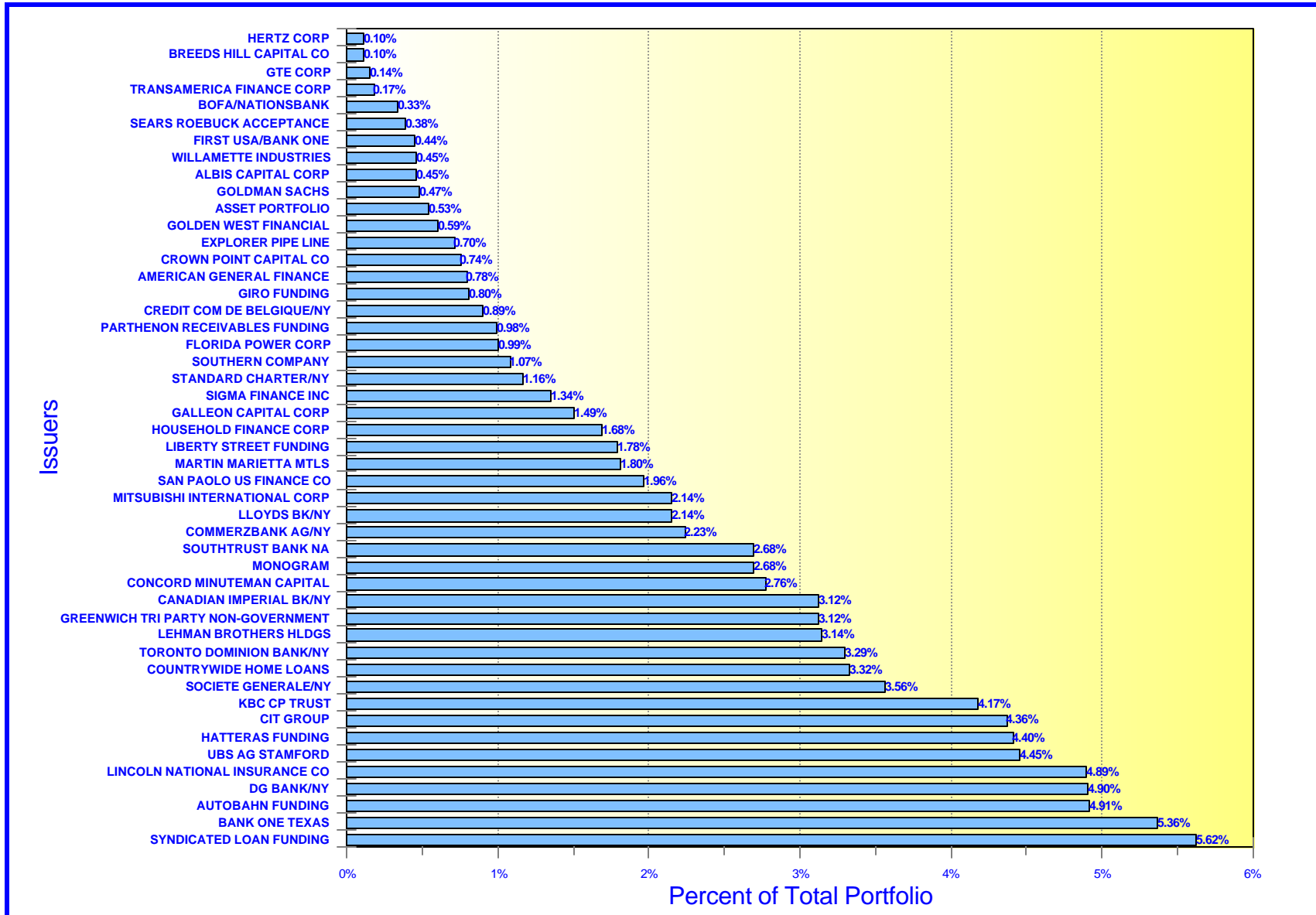


NOTE: See noncompliance report summary for issuers over 5%

ORANGE COUNTY TREASURER - TAX COLLECTOR

EDUCATIONAL INVESTMENT POOL - ISSUER CONCENTRATION

July 31, 2000



NOTE: See noncompliance report summary for issuers over 5%