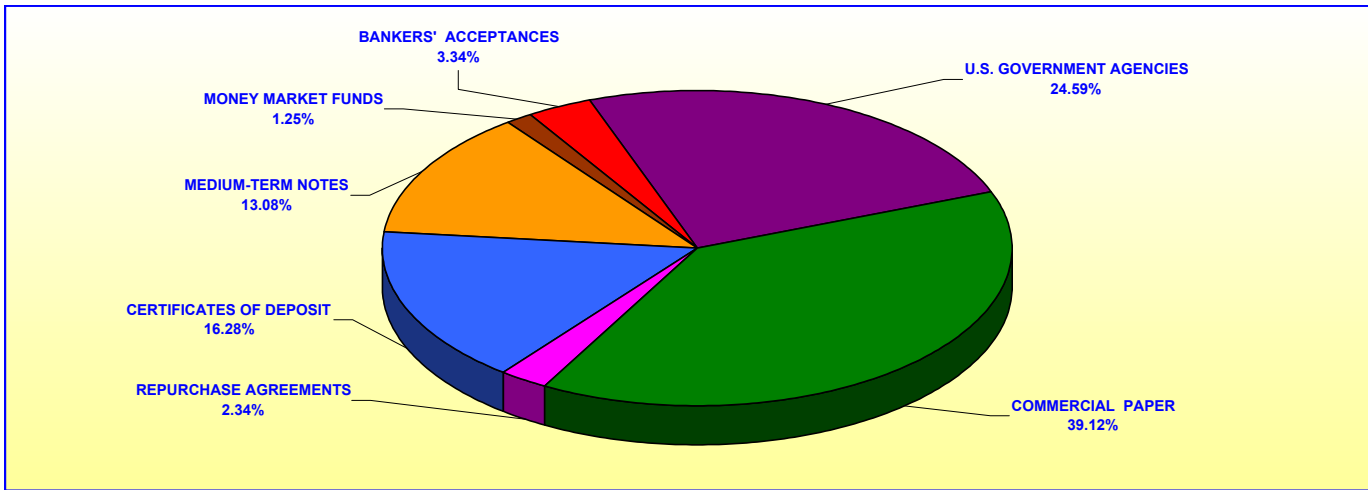
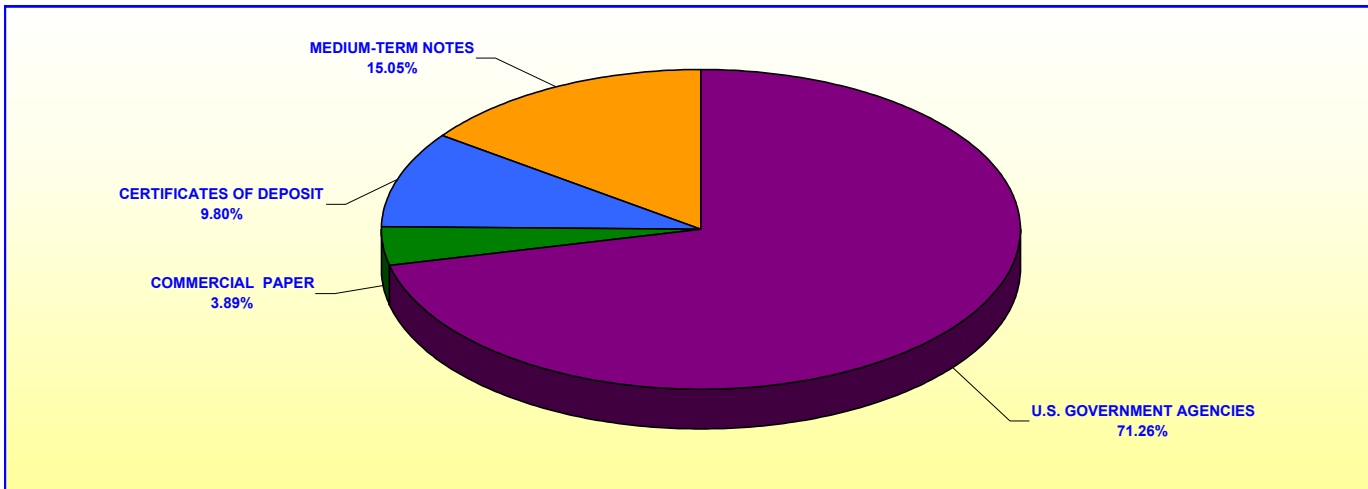


**ORANGE COUNTY TREASURER - TAX COLLECTOR
ORANGE COUNTY INVESTMENT POOL
PORTFOLIO COMPOSITION - BY FUND****

September 30, 2001



MONEY MARKET FUND	
	In Thousands
U.S. GOVERNMENT AGENCIES	\$419,377
COMMERCIAL PAPER	667,258
REPURCHASE AGREEMENTS	40,000
CERTIFICATES OF DEPOSIT	277,600
MEDIUM-TERM NOTES	223,018
MONEY MARKET FUNDS	21,413
BANKERS' ACCEPTANCES	56,902
TOTAL	<u>\$1,705,568</u>

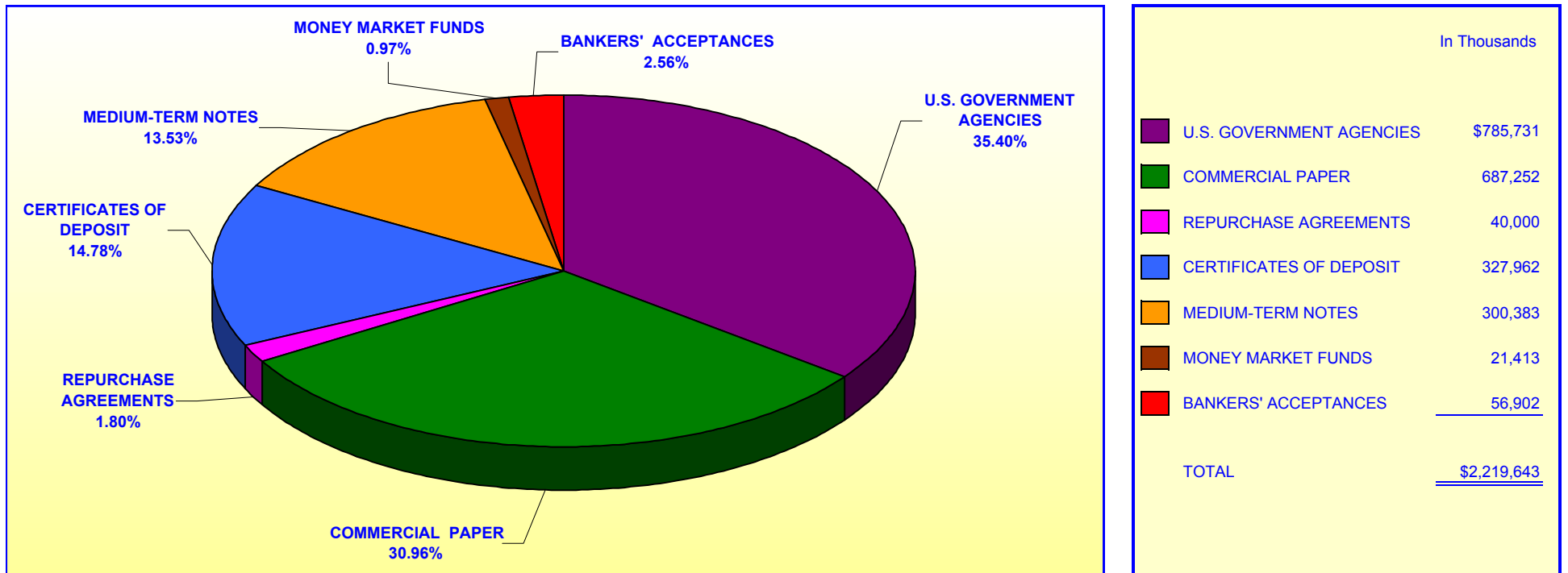


EXTENDED FUND	
	In Thousands
U.S. GOVERNMENT AGENCIES	\$366,354
COMMERCIAL PAPER	19,994
CERTIFICATES OF DEPOSIT	50,362
MEDIUM -TERM NOTES	77,365
TOTAL	<u>\$514,075</u>

Investment Composition Is In Compliance With The Orange County Treasurer's Investment Policy Statement

** Calculated Based Upon Market Value at 9/30/2001

ORANGE COUNTY TREASURER - TAX COLLECTOR
ORANGE COUNTY INVESTMENT POOL
PORTFOLIO COMPOSITION - COMBINED **
September 30, 2001

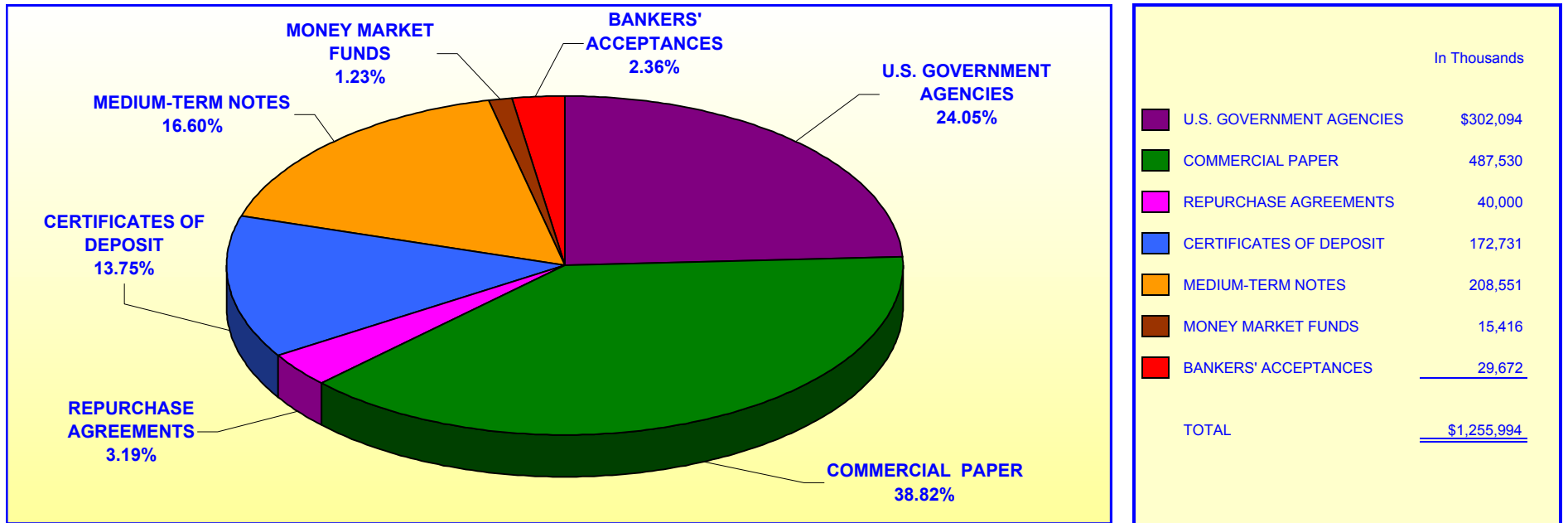


Investment Composition Is In Compliance With The Orange County Treasurer's Investment Policy Statement

***** Calculated Based Upon Market Value at 9/30/2001***

**ORANGE COUNTY TREASURER - TAX COLLECTOR
ORANGE COUNTY EDUCATIONAL INVESTMENT POOL
PORTFOLIO COMPOSITION ****

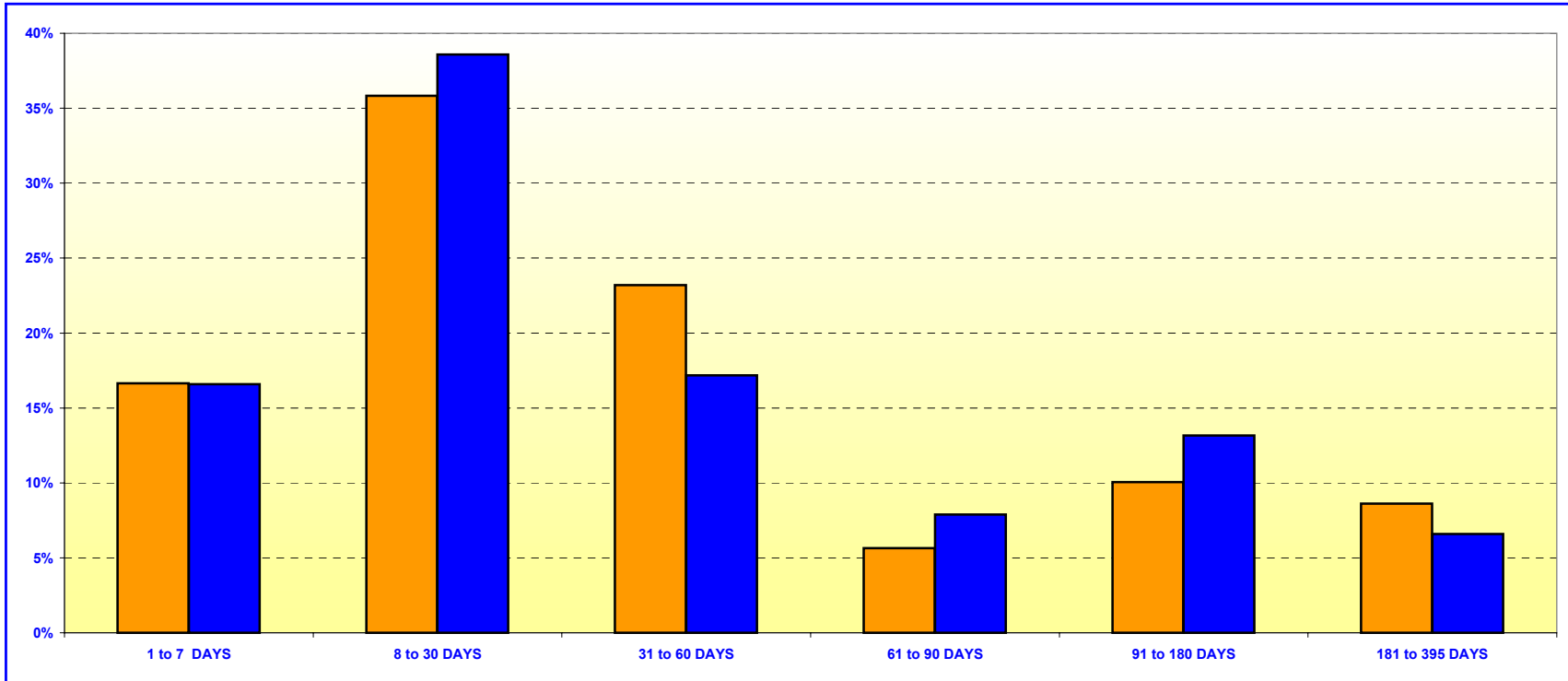
September 30, 2001



Investment Composition Is In Compliance With The Orange County Treasurer's Investment Policy Statement

*** Calculated Based Upon Market Value at 9/30/2001*

ORANGE COUNTY TREASURER - TAX COLLECTOR
ORANGE COUNTY MONEY MARKET FUND AND EDUCATIONAL INVESTMENT POOL
MATURITIES DISTRIBUTION AT COST
 September 30, 2001



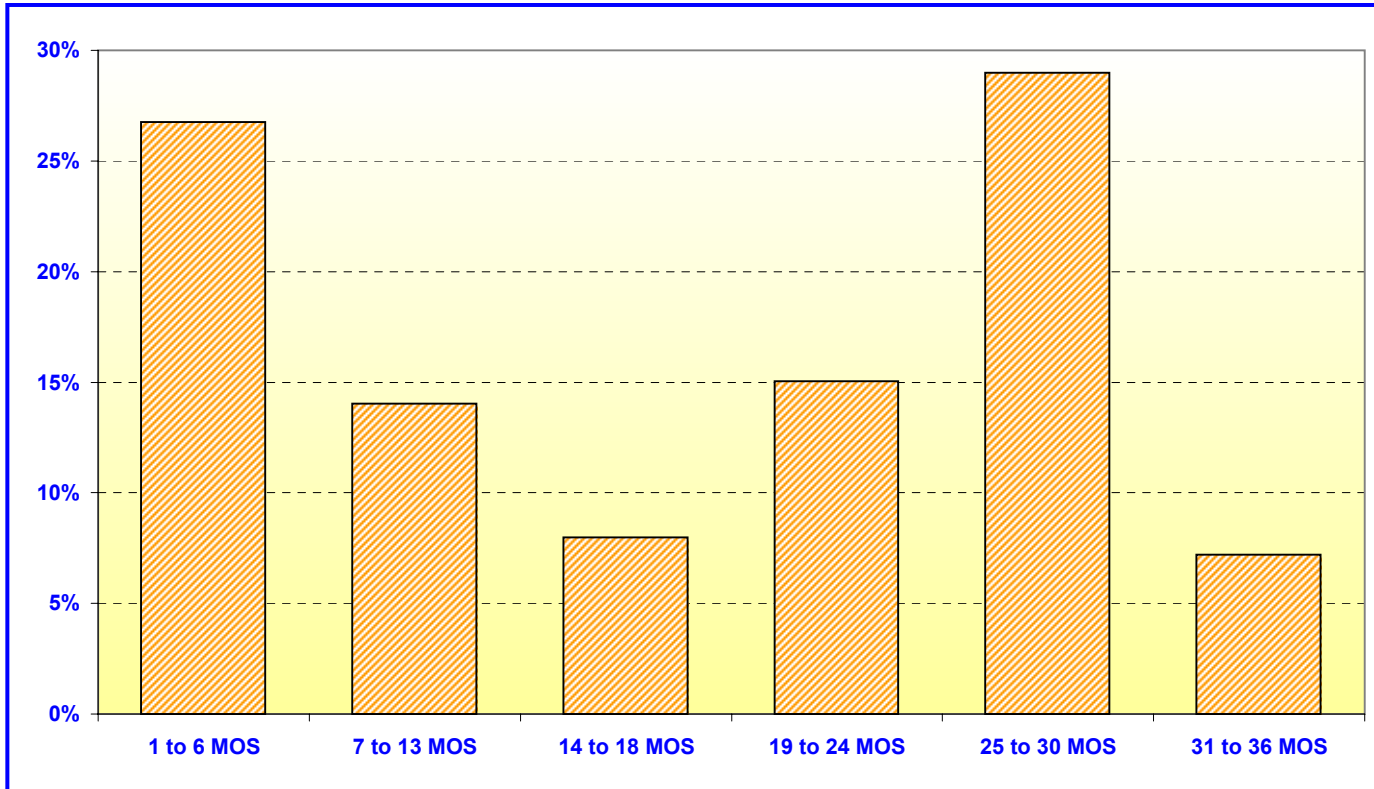
O.C. INVESTMENT POOL MONEY MARKET FUND		
	In Thousands	%
1 TO 7 DAYS	\$282,877	16.65%
8 TO 30 DAYS	608,747	35.83%
31 TO 60 DAYS	394,294	23.20%
61 TO 90 DAYS	95,801	5.64%
91 TO 180 DAYS	170,941	10.06%
181 TO 395 DAYS	146,421	8.62%
TOTAL	\$1,699,081	100.00%

O.C. EDUCATIONAL INVESTMENT POOL		
	In Thousands	%
1 TO 7 DAYS	\$207,409	16.59%
8 TO 30 DAYS	482,541	38.58%
31 TO 60 DAYS	214,902	17.18%
61 TO 90 DAYS	98,565	7.88%
91 TO 180 DAYS	164,690	13.17%
181 TO 395 DAYS	82,555	6.60%
TOTAL	\$1,250,662	100.00%

Maturity Limits Are In Compliance With The Orange County Treasurer's Investment Policy Statement

Floating Rate Notes are deemed to have a maturity date equal to their next interest reset date.
 At September 30, 2001, Floating Rate Notes comprise 5.89% and 4.80% of the O.C. Money Market Fund and Educational Investment Pool, respectively.

ORANGE COUNTY TREASURER - TAX COLLECTOR
ORANGE COUNTY INVESTMENT POOL - EXTENDED FUND
MATURITIES DISTRIBUTION AT COST
September 30, 2001

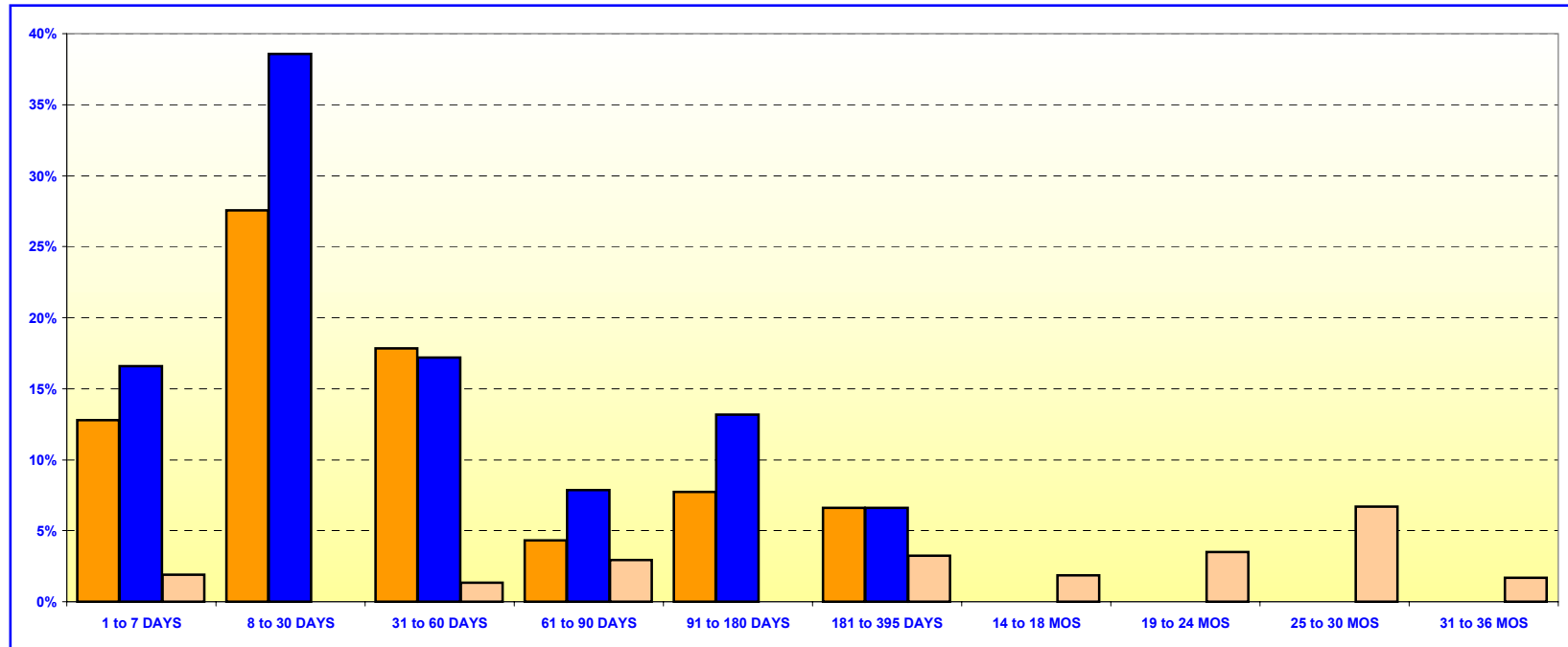


O.C. INVESTMENT POOL EXTENDED FUND		
	In Thousands	%
1 TO 6 MOS	\$136,760	26.77%
7 TO 13 MOS	71,633	14.02%
14 TO 18 MOS	40,742	7.98%
19 TO 24 MOS	76,915	15.06%
25 TO 30 MOS	148,015	28.97%
31 TO 36 MOS	<u>36,793</u>	<u>7.20%</u>
TOTAL	<u><u>\$510,858</u></u>	<u><u>100.00%</u></u>

Maturity Limits Are In Compliance With The Orange County Treasurer's Investment Policy Statement

Floating Rate Notes are deemed to have a maturity date equal to their next interest reset date.
 At September 30, 2001, Floating Rate Notes comprise 8.77% of the O.C. Extended Fund

ORANGE COUNTY TREASURER - TAX COLLECTOR
ORANGE COUNTY AND EDUCATIONAL INVESTMENT POOLS
MATURITIES DISTRIBUTION AT COST
September 30, 2001



O.C. INVESTMENT POOL				
			In Thousands	%
Money Market Fund	1 TO 7 DAYS		\$282,877	12.80%
Money Market Fund	8 TO 30 DAYS		608,747	27.55%
Money Market Fund	31 TO 60 DAYS		394,294	17.84%
Money Market Fund	61 TO 90 DAYS		95,801	4.33%
Money Market Fund	91 TO 180 DAYS		170,941	7.73%
Money Market Fund	181 TO 395 DAYS		146,421	6.63%
Extended Fund	1 TO 7 DAYS		41,923	1.90%
Extended Fund	8 TO 30 DAYS		0	0.00%
Extended Fund	31 TO 60 DAYS		30,000	1.36%
Extended Fund	61 TO 90 DAYS		64,838	2.93%
Extended Fund	91 TO 180 DAYS		0	0.00%
Extended Fund	181 TO 395 DAYS		71,633	3.24%
Extended Fund	14 TO 18 MONTHS		40,742	1.84%
Extended Fund	19 TO 24 MONTHS		76,915	3.48%
Extended Fund	25 TO 30 MONTHS		148,014	6.70%
Extended Fund	31 TO 36 MONTHS		36,793	1.67%
TOTAL			\$2,209,939	100.00%

O.C. EDUCATIONAL INVESTMENT POOL		
	In Thousands	%
1 TO 7 DAYS	\$207,409	16.59%
8 TO 30 DAYS	482,541	38.58%
31 TO 60 DAYS	214,902	17.18%
61 TO 90 DAYS	98,565	7.88%
91 TO 180 DAYS	164,690	13.17%
181 TO 395 DAYS	82,555	6.60%
TOTAL		\$1,250,662 100.00%

Maturity Limits Are In Compliance With The Orange County Treasurer's Investment Policy Statement

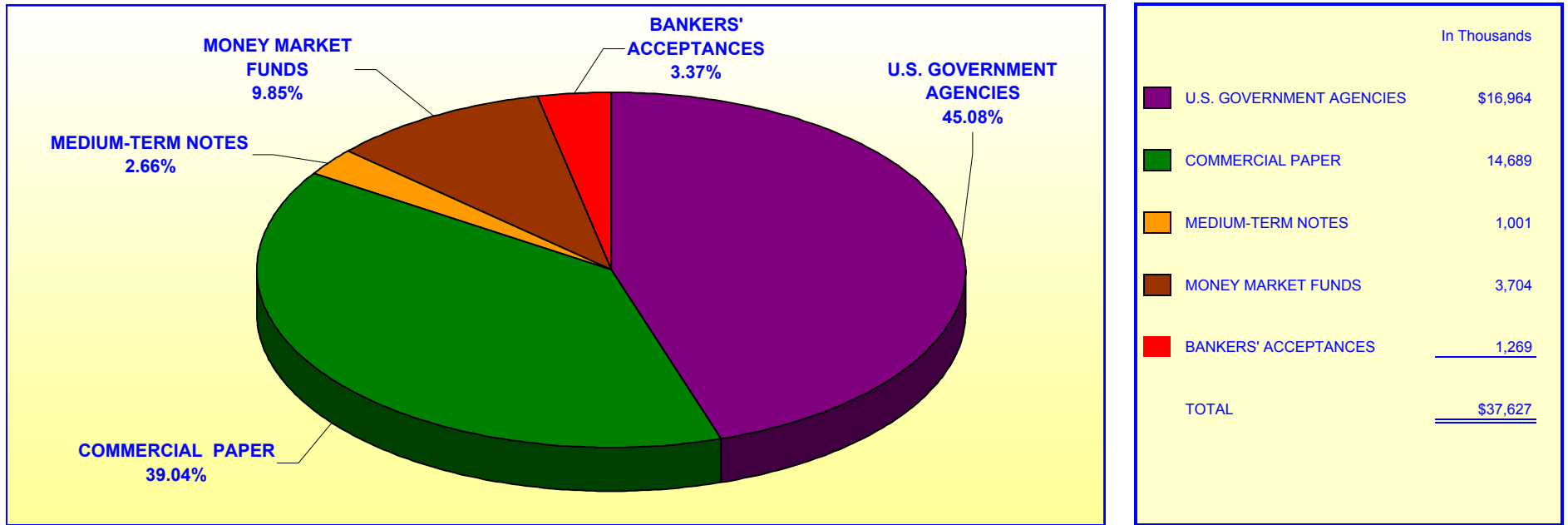
Floating Rate Notes are deemed to have a maturity date equal to their next interest reset date.
 At September 30, 2001, Floating Rate Notes comprise 6.55% and 4.80% of the O.C. Investment Pool and Educational Investment Pool, respectively.

ORANGE COUNTY TREASURER - TAX COLLECTOR

JOHN WAYNE AIRPORT INVESTMENT POOL

PORTFOLIO COMPOSITION **

September 30, 2001



Investment Composition Is In Compliance With The Orange County Treasurer's Investment Policy Statement

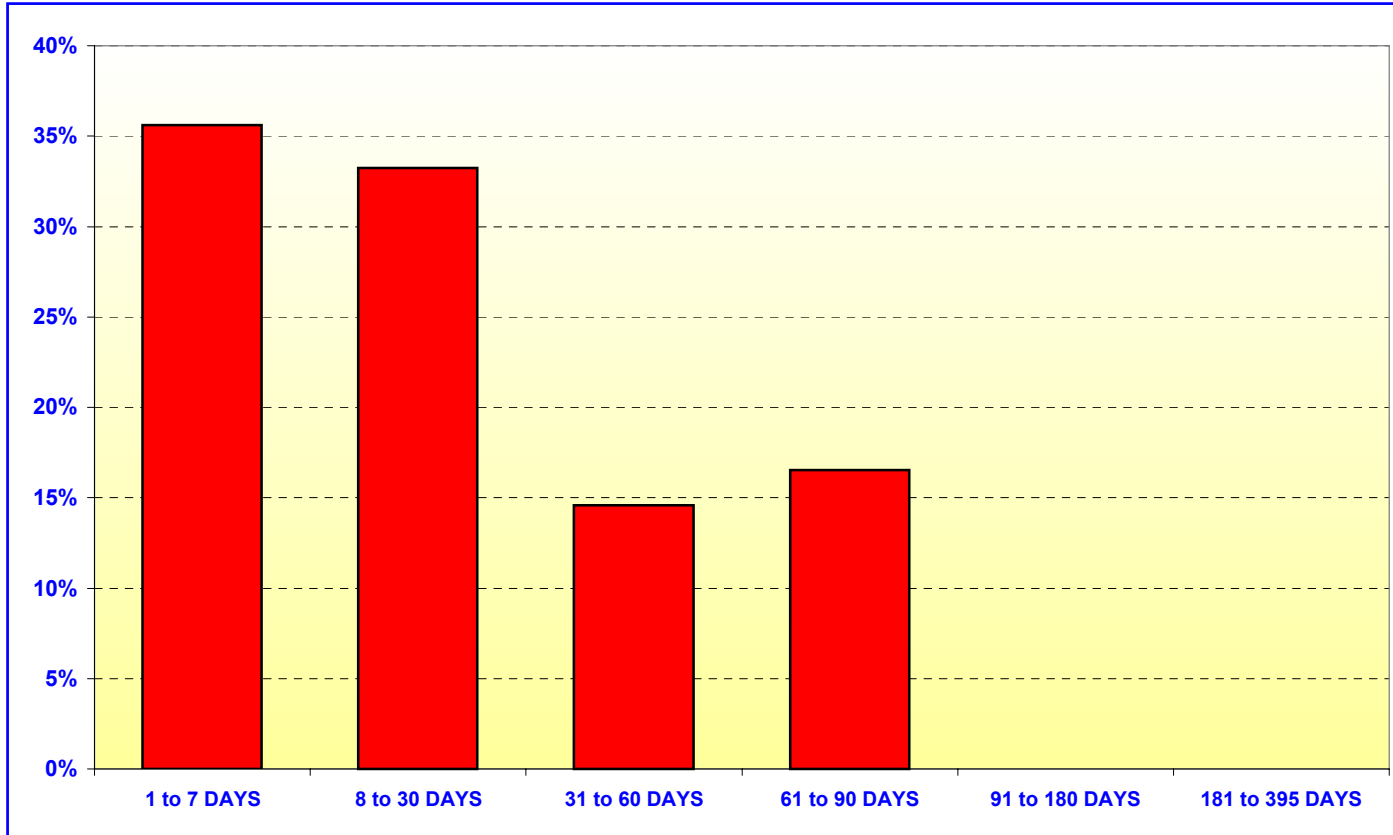
***** Calculated Based Upon Market Value at 9/30/01***

ORANGE COUNTY TREASURER - TAX COLLECTOR

JOHN WAYNE AIRPORT INVESTMENT POOL

MATURITIES DISTRIBUTION AT COST

September 30, 2001



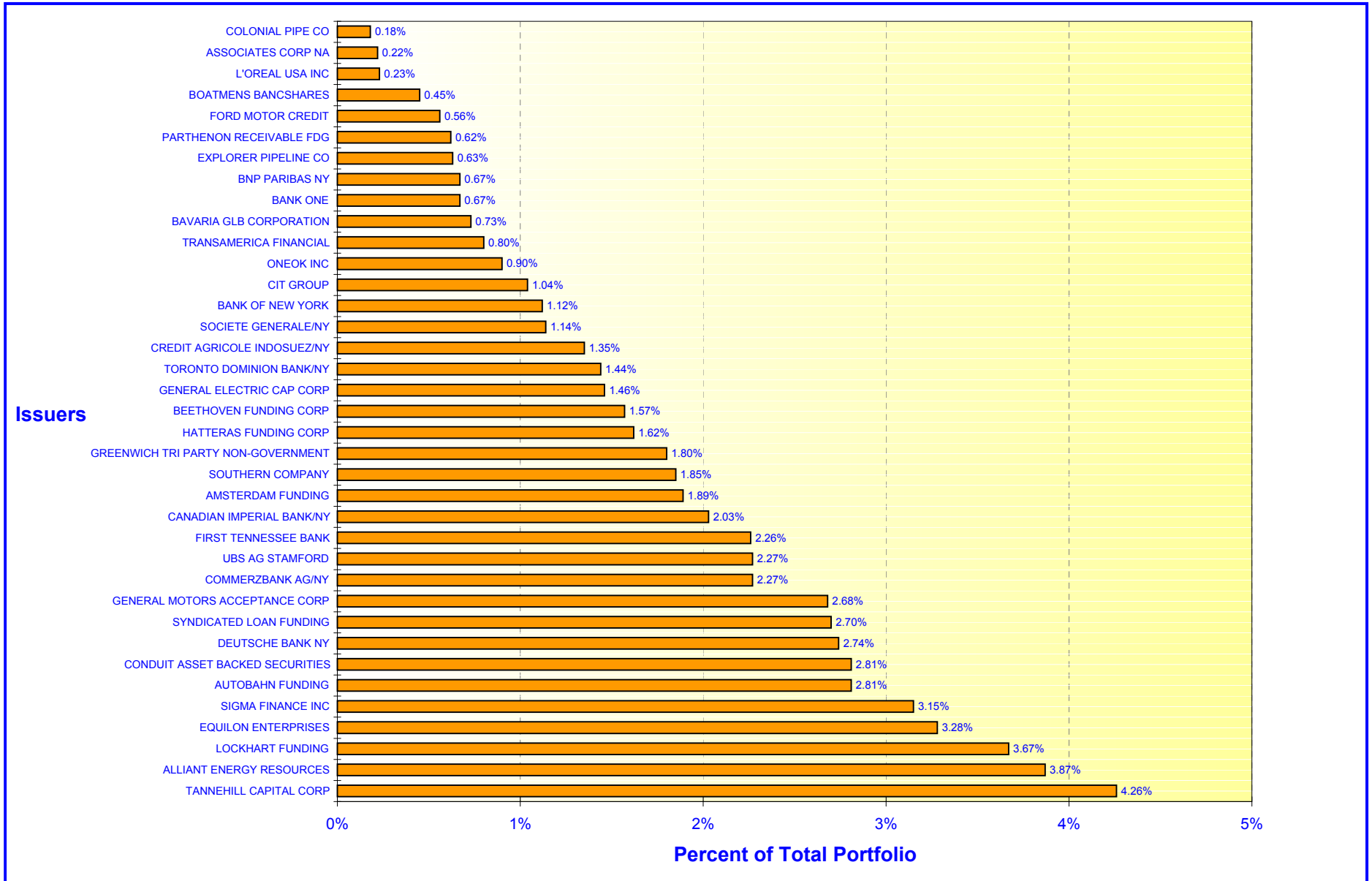
JOHN WAYNE AIRPORT		
	In Thousands	%
1 TO 7 DAYS	\$13,377	35.63%
8 TO 30 DAYS	12,486	33.25%
31 TO 60 DAYS	5,476	14.58%
61 TO 90 DAYS	6,209	16.54%
91 TO 180 DAYS	0	0.00%
181 to 395 DAYS	0	0.00%
TOTAL	<u>\$37,548</u>	<u>100.00%</u>

Maturity Limits Are In Compliance With The Orange County Treasurer's Investment Policy Statement

ORANGE COUNTY TREASURER - TAX COLLECTOR

ORANGE COUNTY INVESTMENT POOL - ISSUER CONCENTRATION

September 30, 2001



ORANGE COUNTY TREASURER - TAX COLLECTOR

EDUCATIONAL INVESTMENT POOL - ISSUER CONCENTRATION

September 30, 2001

