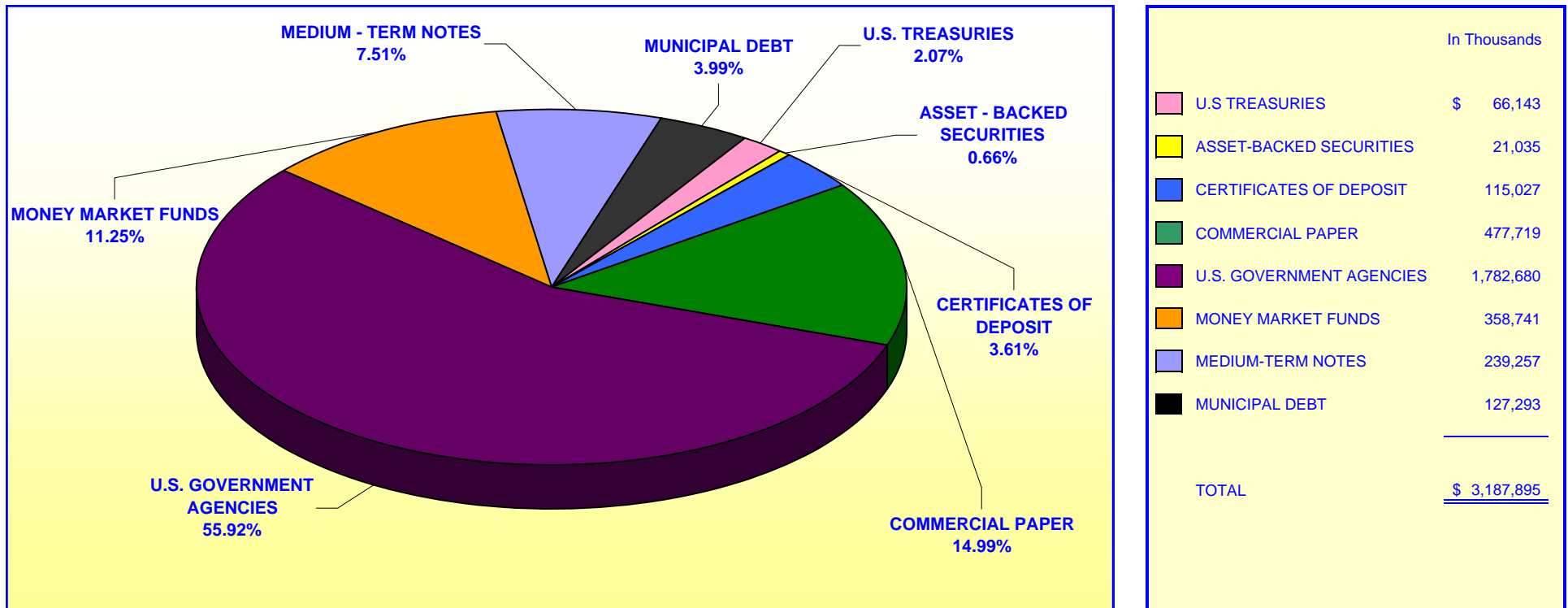


ORANGE COUNTY TREASURER - TAX COLLECTOR
ORANGE COUNTY INVESTMENT POOL
PORTFOLIO COMPOSITION - COMBINED **

September 30, 2009



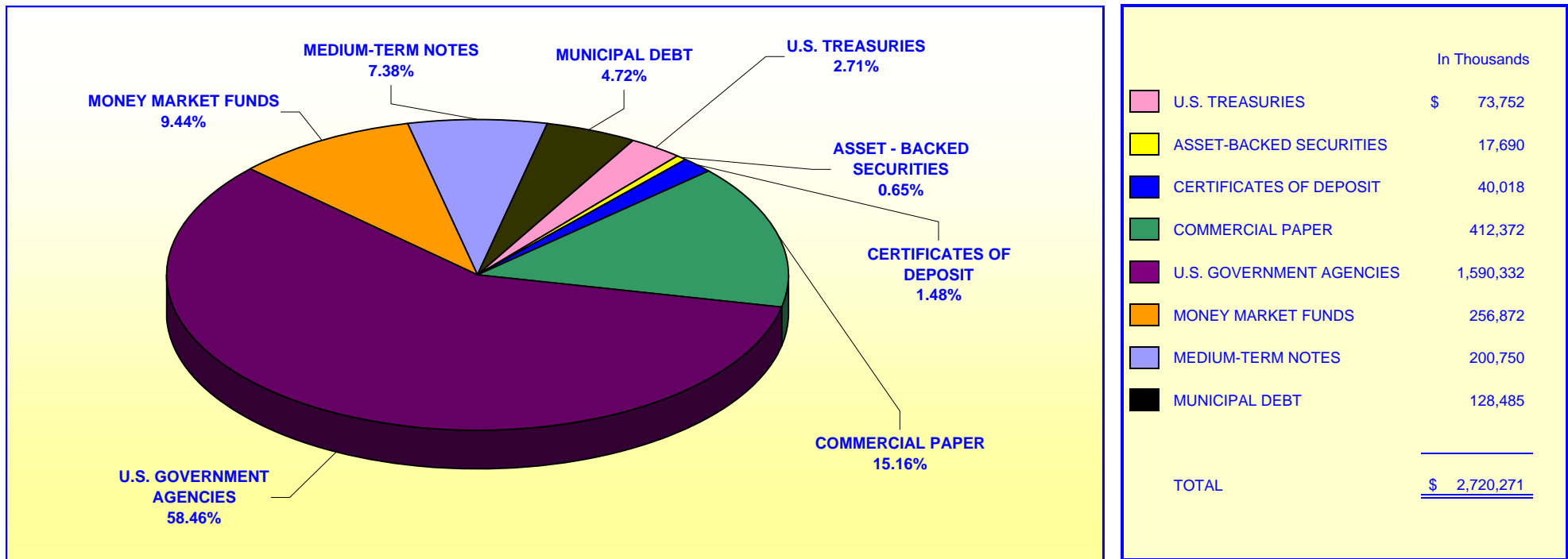
Investment Composition Is In Compliance With The Orange County Treasurer's Investment Policy Statement

**County Investment Pool Includes: Money Market Fund, Extended Fund, & Extended Fund B*

*** Calculated Using Market Value at 9/30/2009*

**ORANGE COUNTY TREASURER - TAX COLLECTOR
ORANGE COUNTY EDUCATIONAL INVESTMENT POOL
PORTFOLIO COMPOSITION - COMBINED ****

September 30, 2009



Investment Composition Is In Compliance With The Orange County Treasurer's Investment Policy Statement

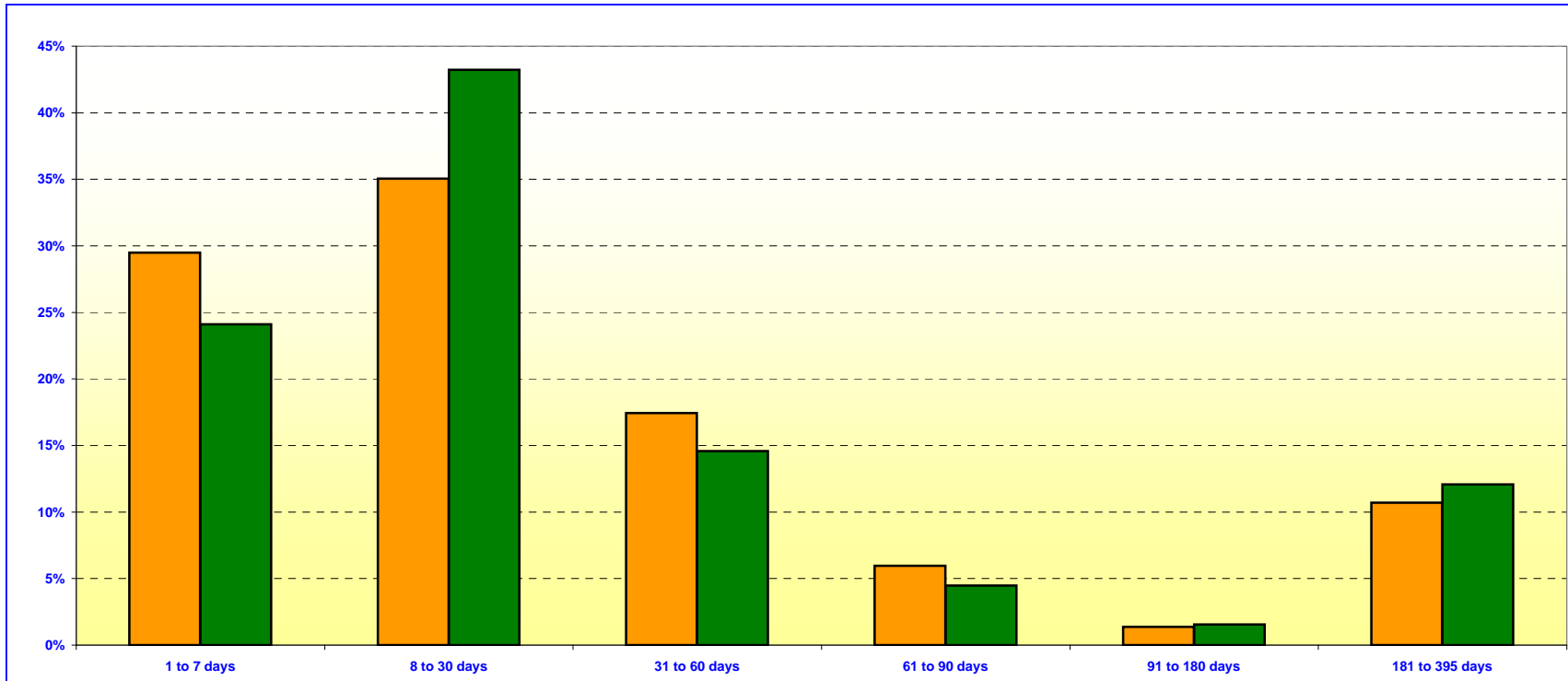
***Educational Investment Pool Includes: Money Market Fund, Extended Fund, & Extended Fund B**

**** Calculated Using Market Value at 9/30/2009**

ORANGE COUNTY TREASURER - TAX COLLECTOR
ORANGE COUNTY MONEY MARKET FUND AND EDUCATIONAL MONEY MARKET FUND

MATURITIES DISTRIBUTION

September 30, 2009



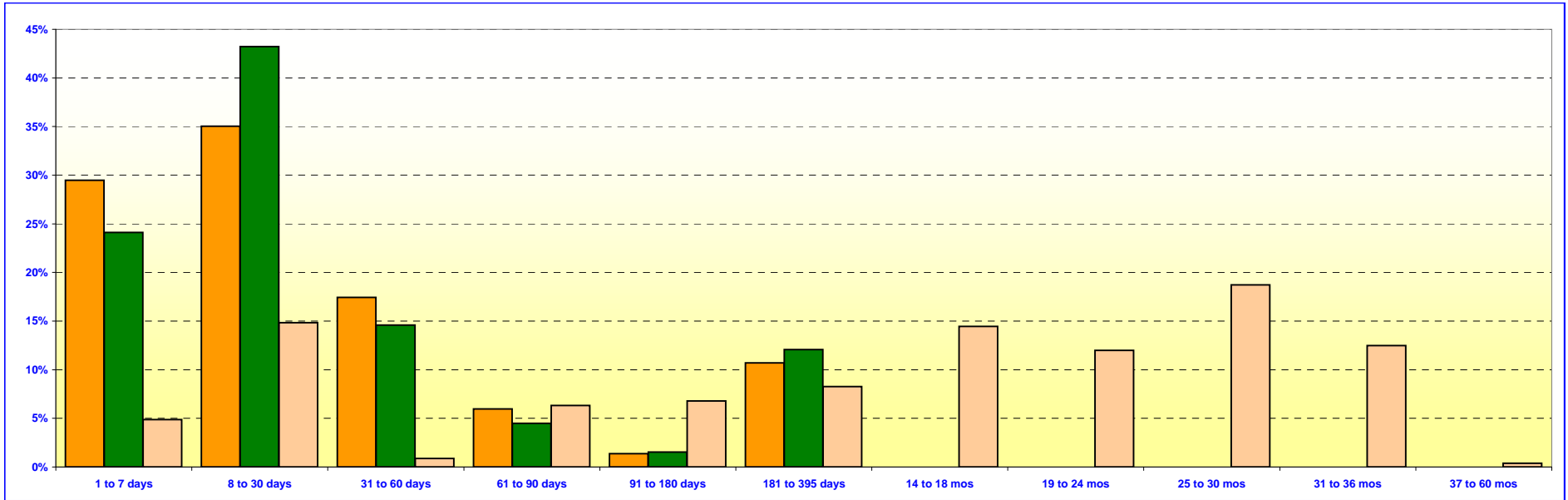
O.C. INVESTMENT POOL MONEY MARKET FUND			
	In Thousands	%	
1 TO 7 DAYS	\$ 579,741	29.48%	
8 TO 30 DAYS	689,325	35.05%	
31 TO 60 DAYS	342,850	17.43%	
61 TO 90 DAYS	117,250	5.96%	
91 TO 180 DAYS	26,766	1.37%	
181 TO 395 DAYS	210,565	10.71%	
TOTAL	\$ 1,966,497	100.00%	

O.C. EDUCATIONAL MONEY MARKET FUND			
	In Thousands	%	
1 TO 7 DAYS	\$ 329,272	24.11%	
8 TO 30 DAYS	590,376	43.22%	
31 TO 60 DAYS	199,220	14.58%	
61 TO 90 DAYS	61,170	4.48%	
91 TO 180 DAYS	21,063	1.54%	
181 TO 395 DAYS	164,874	12.07%	
TOTAL	\$ 1,365,975	100.00%	

Maturity Limits Are In Compliance With The Orange County Treasurer's Investment Policy Statement

Floating Rate Notes are deemed to have a maturity date equal to their next interest reset date.
 At 9/30/2009 Floating Rate Notes comprise 30.18% and 22.81% of the O.C. Money Market Fund and Educational Money Market Fund respectively.

ORANGE COUNTY TREASURER - TAX COLLECTOR
ORANGE COUNTY AND EDUCATIONAL INVESTMENT POOLS
MATURITIES DISTRIBUTION
September 30, 2009



O.C. INVESTMENT POOL MONEY MARKET FUND		
	In Thousands	%
1 TO 7 DAYS	\$ 579,741	29.48%
8 TO 30 DAYS	\$ 689,325	35.05%
31 TO 60 DAYS	\$ 342,850	17.43%
61 TO 90 DAYS	\$ 117,250	5.96%
91 TO 180 DAYS	\$ 26,766	1.37%
181 TO 395 DAYS	\$ 210,565	10.71%
TOTAL	\$ 1,966,497	100.00%

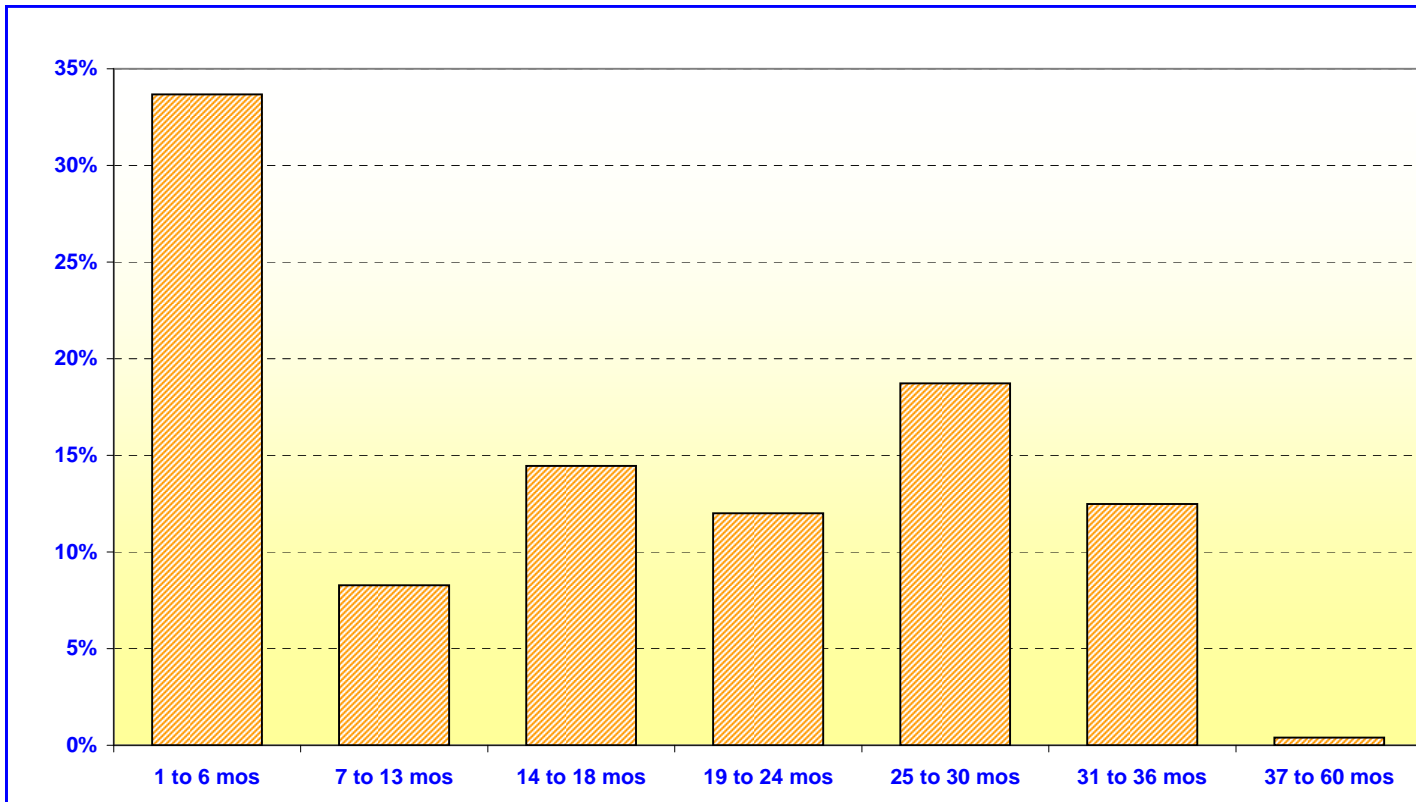
O.C. EDUCATIONAL MONEY MARKET FUND		
	In Thousands	%
1 TO 7 DAYS	\$ 329,272	24.11%
8 TO 30 DAYS	\$ 590,376	43.22%
31 TO 60 DAYS	\$ 199,220	14.58%
61 TO 90 DAYS	\$ 61,170	4.48%
91 TO 180 DAYS	\$ 21,063	1.54%
181 TO 395 DAYS	\$ 164,874	12.07%
TOTAL	\$ 1,365,975	100.00%

O.C. INVESTMENT POOL EXTENDED FUND (Included Extended Fund B)		
	In Thousands	%
1 TO 7 DAYS	\$ 125,000	4.88%
8 TO 30 DAYS	\$ 379,803	14.83%
31 TO 60 DAYS	\$ 22,300	0.87%
61 TO 90 DAYS	\$ 161,500	6.31%
91 TO 180 DAYS	\$ 173,635	6.78%
181 TO 395 DAYS	\$ 212,014	8.28%
14 TO 18 MONTHS	\$ 370,000	14.45%
19 TO 24 MONTHS	\$ 307,450	12.00%
25 TO 30 MONTHS	\$ 479,325	18.72%
31 TO 36 MONTHS	\$ 320,000	12.49%
37 TO 60 MONTHS	\$ 10,000	0.39%
TOTAL	\$ 2,561,027	100.00%

Maturity Limits Are In Compliance With The Orange County Treasurer's Investment Policy Statement

Floating Rate Notes are deemed to have a maturity date equal to their next interest reset date.
 At 09/30/2009, Floating Rate Notes comprise 30.18%, 13.22%, and 22.81% of the O.C. Investment Pool, Extended Funds, and Educational Money Market Fund respectively.

ORANGE COUNTY TREASURER - TAX COLLECTOR
ORANGE COUNTY - EXTENDED FUND
MATURITIES DISTRIBUTION
September 30, 2009



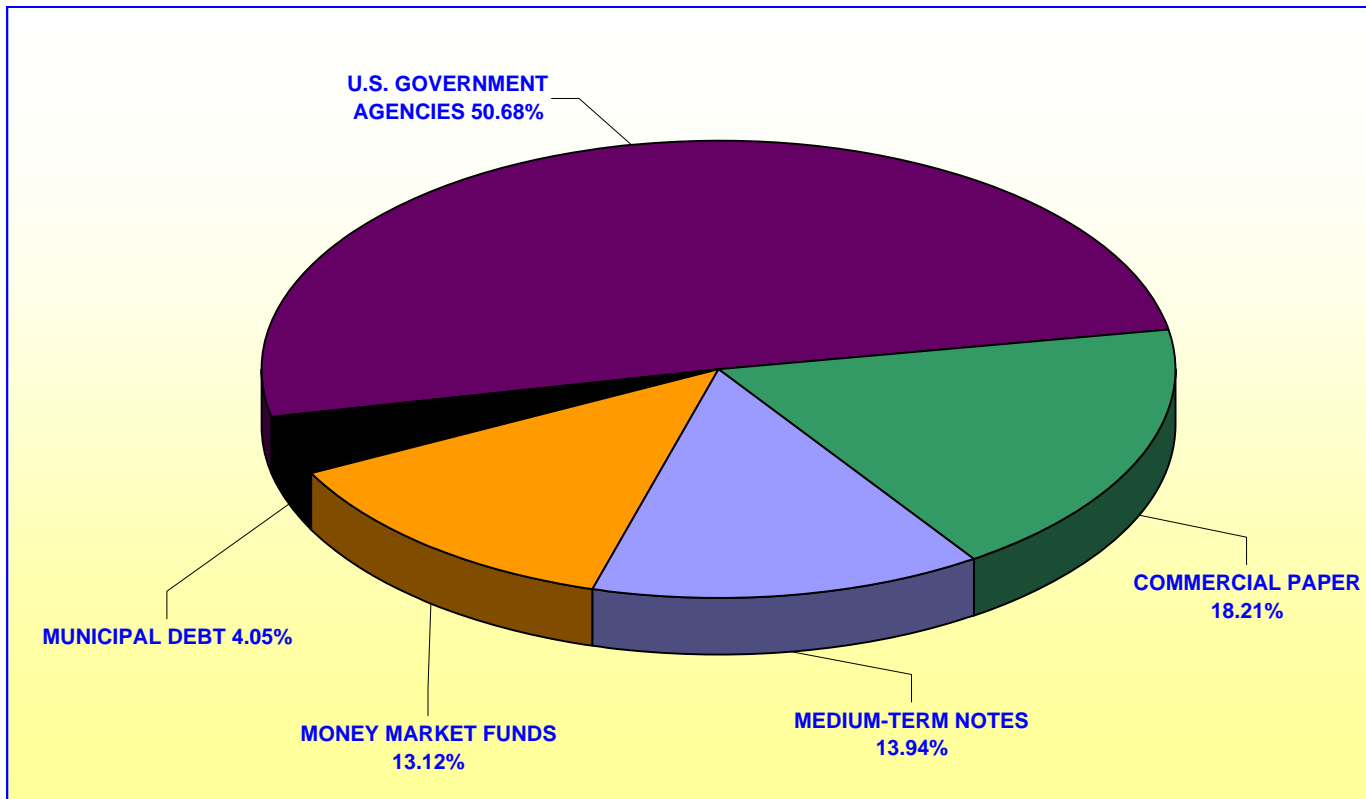
ORANGE COUNTY EXTENDED FUND (includes Extended Fund B)		
	In Thousands	%
1 TO 6 MOS	\$ 862,238	33.67%
7 TO 13 MOS	212,014	8.28%
14 TO 18 MOS	370,000	14.45%
19 TO 24 MOS	307,450	12.00%
25 TO 30 MOS	479,325	18.72%
31 TO 36 MOS	320,000	12.49%
37 TO 60 MOS	10,000	0.39%
TOTAL	<u>\$ 2,561,027</u>	<u>100.00%</u>

Maturity Limits Are In Compliance With The Orange County Treasurer's Investment Policy Statement

Floating Rate Notes are deemed to have a maturity date equal to their next interest reset date.
At 09/30/2009, Floating Rate Notes comprise 13.22% of the O.C. Extended Fund.

**ORANGE COUNTY TREASURER - TAX COLLECTOR
JOHN WAYNE AIRPORT INVESTMENT POOL
PORTFOLIO COMPOSITION ****

September 30, 2009



In Thousands

U.S. GOVERNMENT AGENCIES	\$	25,042
COMMERCIAL PAPER		9,000
MUNICIPAL DEBT		2,000
MEDIUM-TERM NOTES		6,886
MONEY MARKET FUNDS		6,481
TOTAL	\$	<u>49,409</u>

Investment Composition Is In Compliance With The Orange County Treasurer's Investment Policy Statement

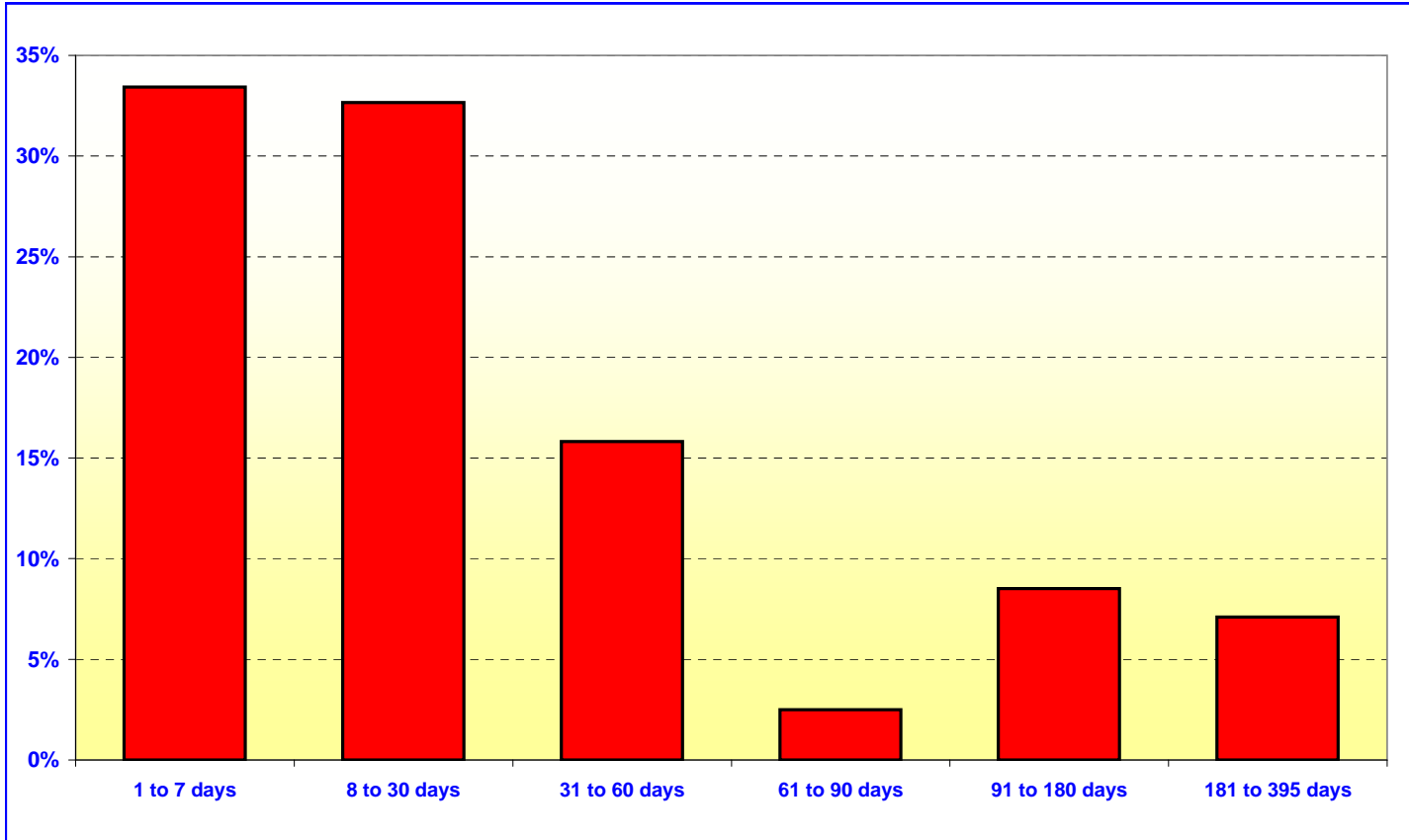
*** Calculated Using Market Value at 9/30/2009*

ORANGE COUNTY TREASURER - TAX COLLECTOR

JOHN WAYNE AIRPORT INVESTMENT POOL

MATURITIES DISTRIBUTION

September 30, 2009



JOHN WAYNE AIRPORT		
	In Thousands	%
1 TO 7 DAYS	\$ 16,481	33.43%
8 TO 30 DAYS	16,100	32.65%
31 TO 60 DAYS	7,800	15.82%
61 TO 90 DAYS	1,230	2.49%
91 TO 180 DAYS	4,195	8.51%
181 TO 395 DAYS	3,500	7.10%
TOTAL	\$ 49,306	100.00%

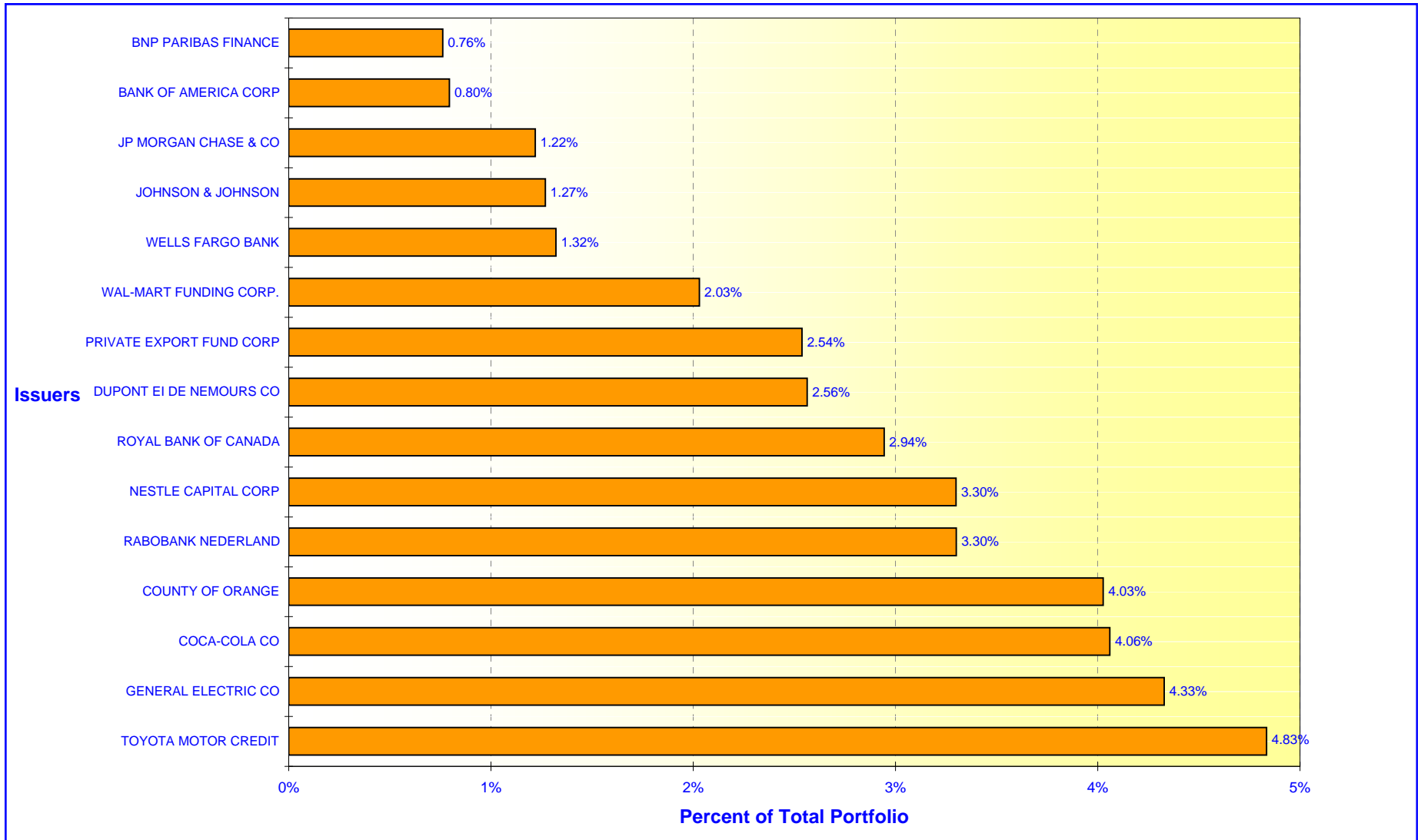
Maturity Limits Are In Compliance With The Orange County Treasurer's Investment Policy Statement

Floating Rate Notes are deemed to have a maturity date equal to their next interest reset date.
 At 9/30/2009, Floating Rate Notes comprise 37.58% of the John Wayne Airport

ORANGE COUNTY TREASURER - TAX COLLECTOR

ORANGE COUNTY MONEY MARKET FUND - ISSUER CONCENTRATION

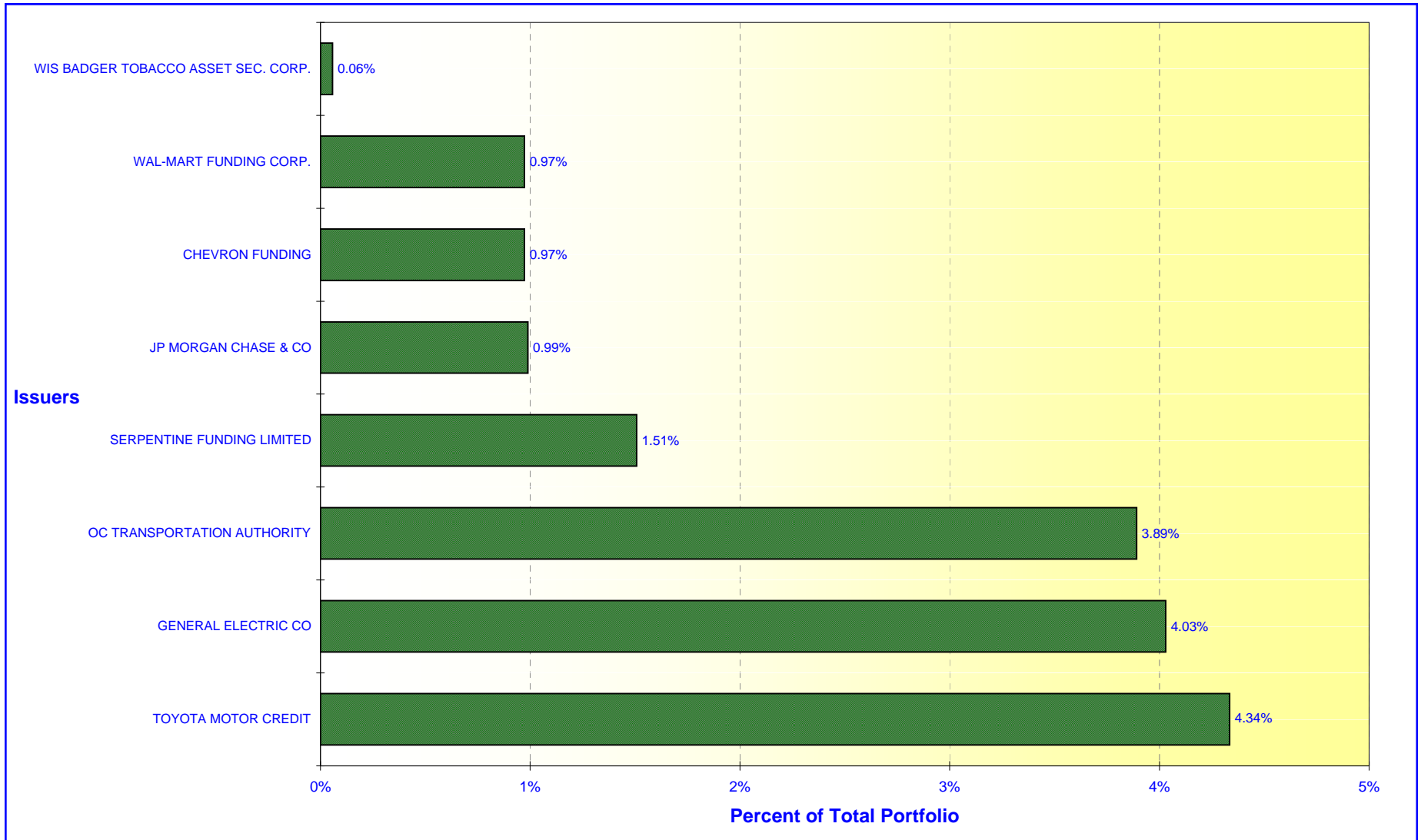
September 30, 2009



ORANGE COUNTY TREASURER - TAX COLLECTOR

ORANGE COUNTY EXTENDED FUND - ISSUER CONCENTRATION

September 30, 2009



Note: Extended Fund includes Extended Fund B

ORANGE COUNTY TREASURER - TAX COLLECTOR

EDUCATIONAL MONEY MARKET FUND - ISSUER CONCENTRATION

September 30, 2009

