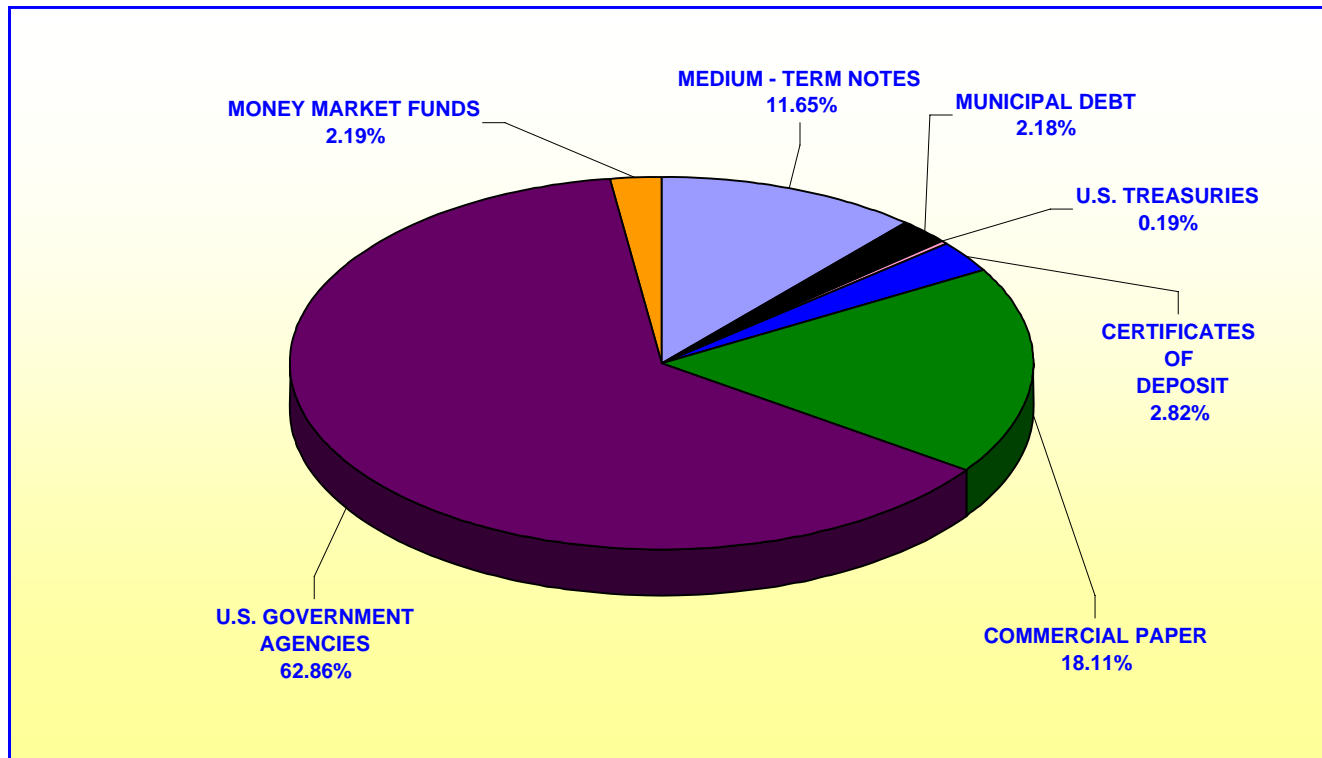


**ORANGE COUNTY TREASURER - TAX COLLECTOR  
ORANGE COUNTY INVESTMENT POOL  
PORTFOLIO COMPOSITION - COMBINED \*\***

**October 31, 2008**



In Thousands	
CERTIFICATES OF DEPOSIT	\$ 90,000
COMMERCIAL PAPER	577,910
U.S. GOVERNMENT AGENCIES	2,005,675
MONEY MARKET FUNDS	69,897
MEDIUM-TERM NOTES	371,963
MUNICIPAL DEBT	69,500
U.S. TREASURIES	5,980
<b>TOTAL</b>	<u><u>\$ 3,190,925</u></u>

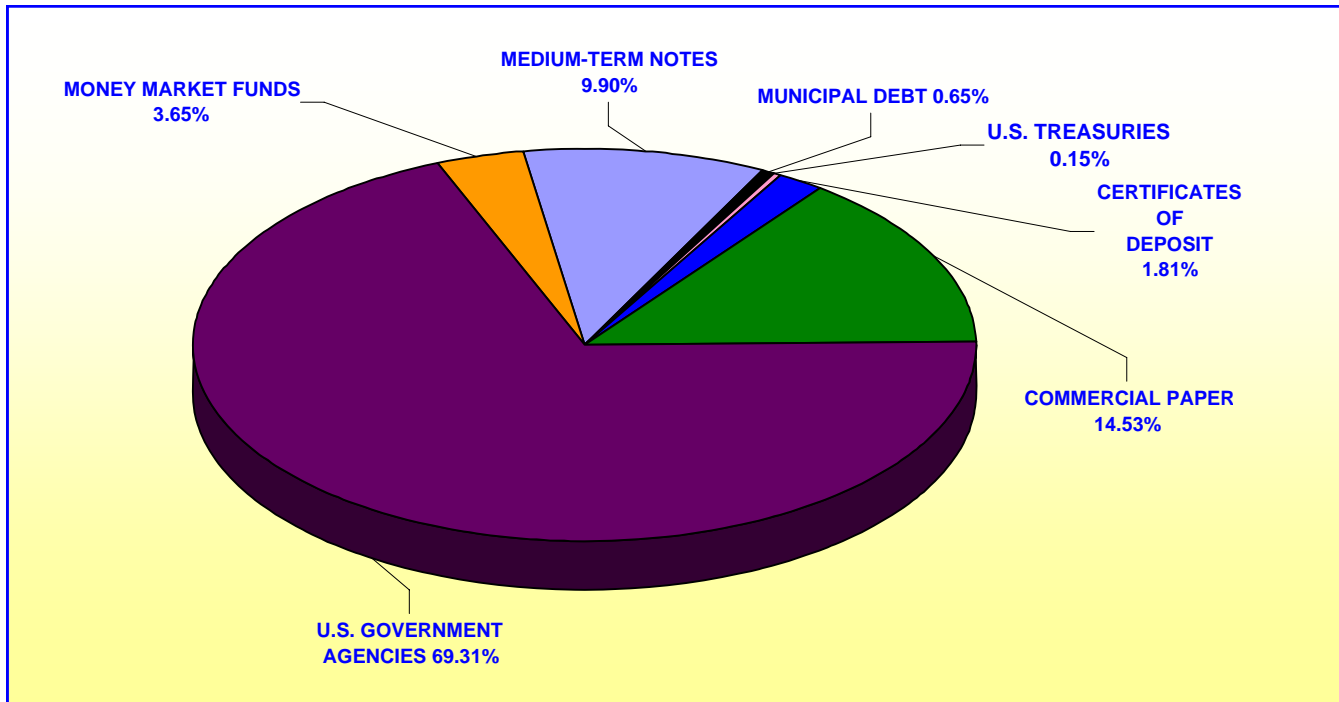
*Investment Composition Is In Compliance With The Orange County Treasurer's Investment Policy Statement*








*\*County Investment Pool Includes: Money Market Fund, Extended Fund, & Extended Fund B*

*\*\* Calculated Using Market Value at 10/31/2008*

**ORANGE COUNTY TREASURER - TAX COLLECTOR  
ORANGE COUNTY EDUCATIONAL INVESTMENT POOL  
PORTFOLIO COMPOSITION - COMBINED \*\***

**October 31, 2008**



		In Thousands
	CERTIFICATES OF DEPOSIT	\$ 50,000
	COMMERCIAL PAPER	401,607
	U.S. GOVERNMENT AGENCIES	1,915,939
	MONEY MARKET FUNDS	100,716
	MEDIUM-TERM NOTES	273,747
	MUNICIPAL DEBT	18,005
	U.S. TREASURIES	4,168
	<b>TOTAL</b>	<b><u>\$ 2,764,182</u></b>

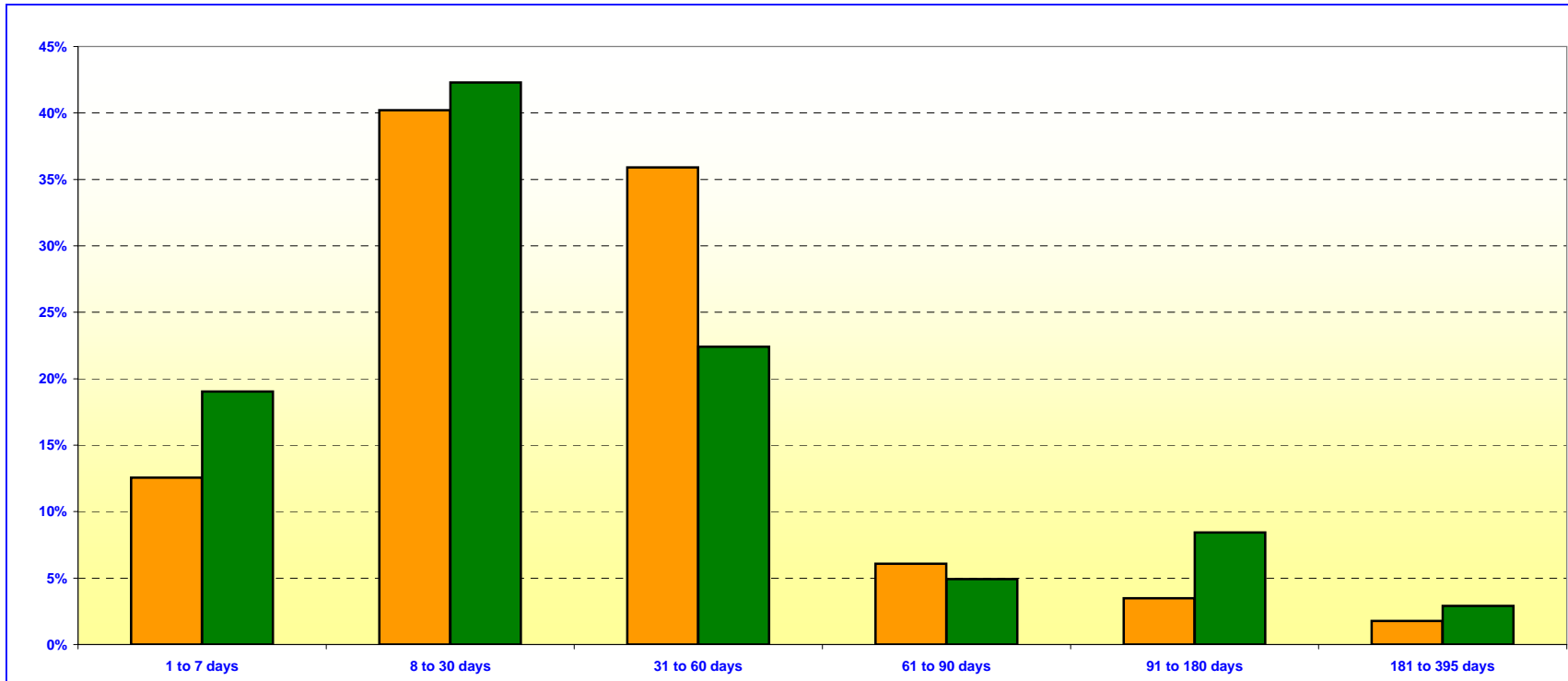
*Investment Composition Is In Compliance With The Orange County Treasurer's Investment Policy Statement*

**\*\* Calculated Using Market Value at 10/31/2008**

**ORANGE COUNTY TREASURER - TAX COLLECTOR**  
**ORANGE COUNTY MONEY MARKET FUND AND EDUCATIONAL MONEY MARKET FUND**

**MATURITIES DISTRIBUTION**

October 31, 2008



<b>O.C. INVESTMENT POOL MONEY MARKET FUND</b>			
	In Thousands		%
1 TO 7 DAYS	\$ 212,897		12.55%
8 TO 30 DAYS	681,665		40.20%
31 TO 60 DAYS	608,718		35.90%
61 TO 90 DAYS	103,265		6.09%
91 TO 180 DAYS	59,077		3.48%
181 TO 395 DAYS	30,100		1.78%
<b>TOTAL</b>	<b>\$ 1,695,722</b>		<b>100.00%</b>

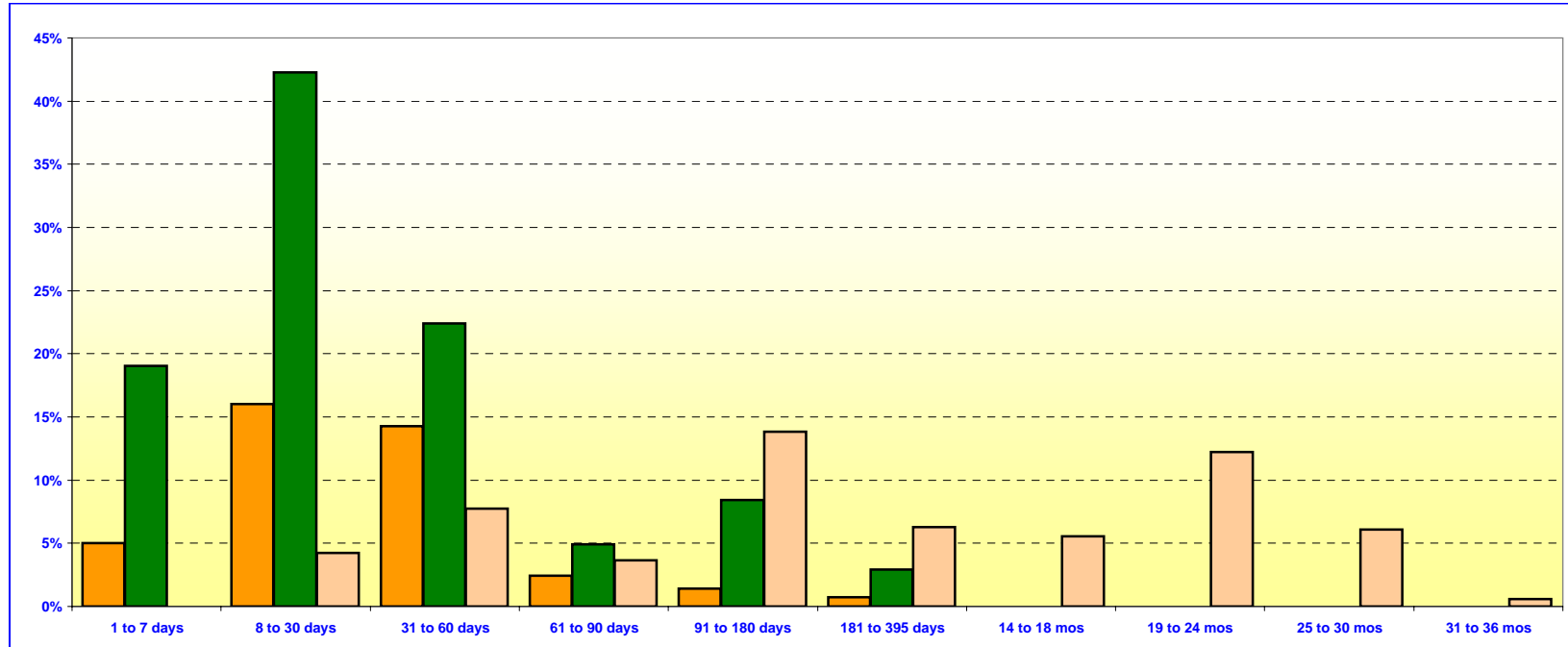
<b>O.C. EDUCATIONAL MONEY MARKET FUND</b>			
	In Thousands		%
1 TO 7 DAYS	\$ 327,409		19.03%
8 TO 30 DAYS	727,505		42.29%
31 TO 60 DAYS	385,439		22.41%
61 TO 90 DAYS	84,770		4.93%
91 TO 180 DAYS	145,000		8.43%
181 TO 395 DAYS	50,000		2.91%
<b>TOTAL</b>	<b>\$ 1,720,123</b>		<b>100.00%</b>

***Maturity Limits Are In Compliance With The Orange County Treasurer's Investment Policy Statement***

Floating Rate Notes are deemed to have a maturity date equal to their next interest reset date.  
 At October 31, 2008 Floating Rate Notes comprise 15.30% and 10.78% of the O.C. Money Market Fund and Educational Money Market Fund respectively.

**ORANGE COUNTY TREASURER - TAX COLLECTOR**  
**ORANGE COUNTY AND EDUCATIONAL INVESTMENT POOLS**  
**MATURITIES DISTRIBUTION**

October 31, 2008



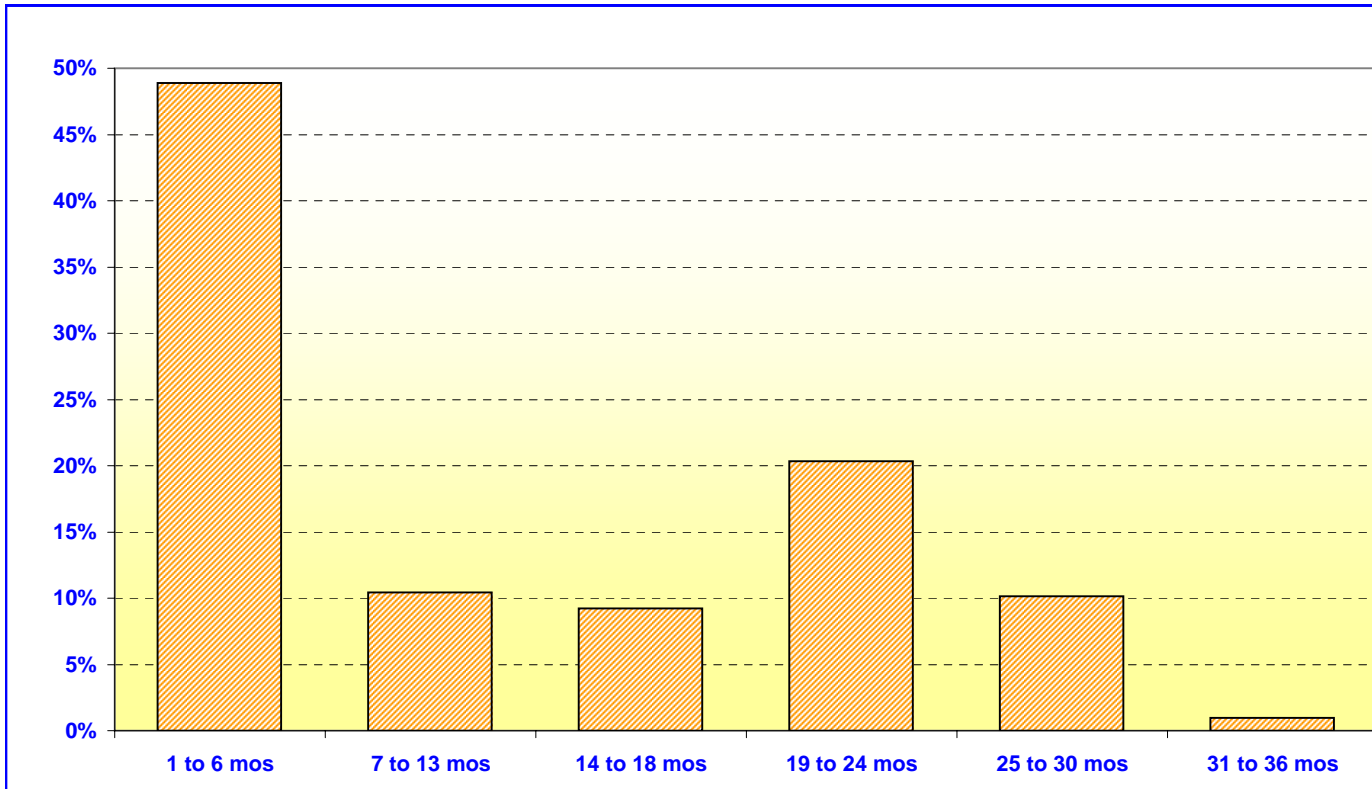
<b>O.C. INVESTMENT POOL</b>					
(includes MMF, Extended Fund, & Extended Fund B)					
				In Thousands	%
	Money Market Fund	1 TO 7 DAYS	\$ 212,897	5.00%	
	Money Market Fund	8 TO 30 DAYS	681,665	16.00%	
	Money Market Fund	31 TO 60 DAYS	608,718	14.29%	
	Money Market Fund	61 TO 90 DAYS	103,265	2.42%	
	Money Market Fund	91 TO 180 DAYS	59,077	1.39%	
	Money Market Fund	181 TO 395 DAYS	30,100	0.71%	
	Extended Fund	1 TO 7 DAYS	-	-	
	Extended Fund	8 TO 30 DAYS	179,800	4.22%	
	Extended Fund	31 TO 60 DAYS	329,040	7.72%	
	Extended Fund	61 TO 90 DAYS	154,947	3.64%	
	Extended Fund	91 TO 180 DAYS	590,000	13.85%	
	Extended Fund	181 TO 395 DAYS	267,596	6.28%	
	Extended Fund	14 TO 18 MONTHS	236,765	5.56%	
	Extended Fund	19 TO 24 MONTHS	521,030	12.23%	
	Extended Fund	25 TO 30 MONTHS	259,894	6.10%	
	Extended Fund	31 TO 36 MONTHS	25,000	0.59%	
<b>TOTAL</b>			<u>\$ 4,259,794</u>	<u>100.00%</u>	

<b>O.C. EDUCATIONAL MONEY MARKET FUND</b>				
			In Thousands	%
	1 TO 7 DAYS	\$ 327,409	19.03%	
	8 TO 30 DAYS	727,505	42.29%	
	31 TO 60 DAYS	385,439	22.41%	
	61 TO 90 DAYS	84,770	4.93%	
	91 TO 180 DAYS	145,000	8.43%	
	181 TO 395 DAYS	50,000	2.91%	
<b>TOTAL</b>		<u>\$ 1,720,123</u>	<u>100.00%</u>	

**Maturity Limits Are In Compliance With The Orange County Treasurer's Investment Policy Statement**

Floating Rate Notes are deemed to have a maturity date equal to their next interest reset date.  
 At October 31, 2008, Floating Rate Notes comprise 14.89% and 10.78% of the O.C. Investment Pool and Educational Money Market Fund respectively.

**ORANGE COUNTY TREASURER - TAX COLLECTOR**  
**ORANGE COUNTY INVESTMENT POOL - EXTENDED FUND**  
**MATURITIES DISTRIBUTION**  
**October 31, 2008**



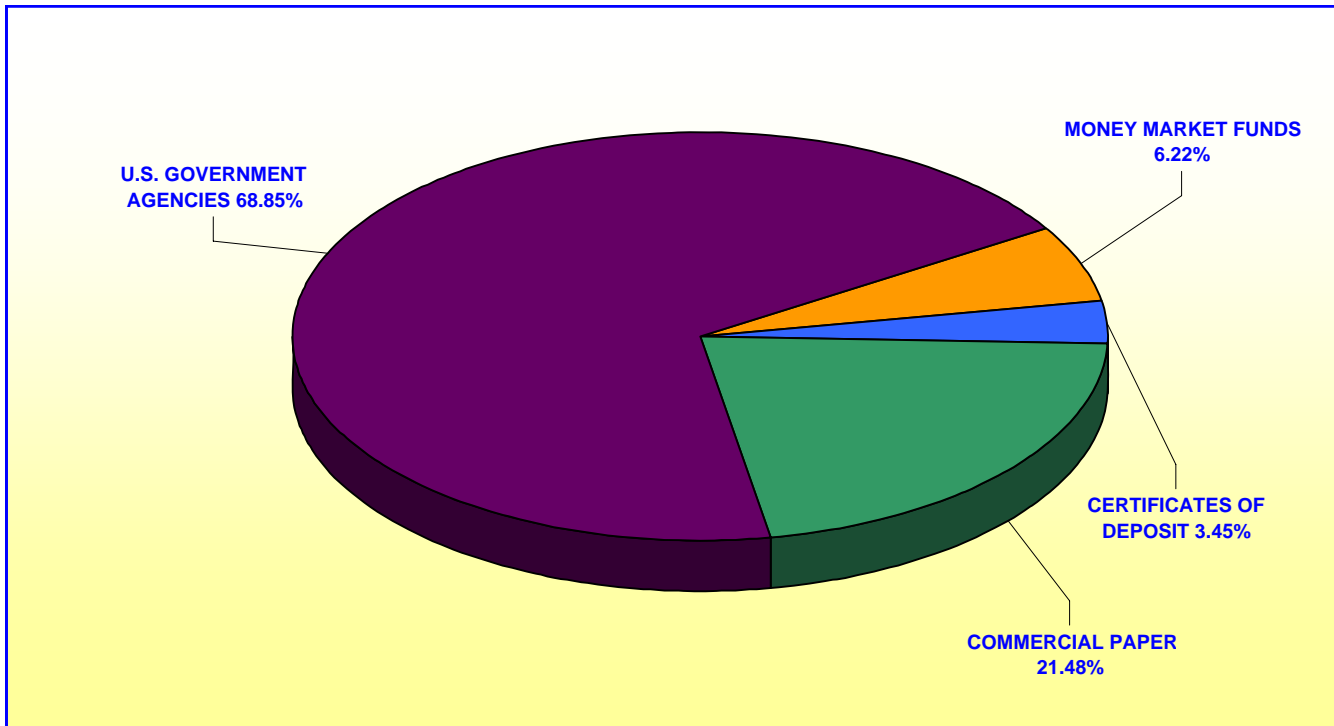
<b>O.C. INVESTMENT POOL EXTENDED FUND</b> (includes Extended Fund B)		
	In Thousands	%
1 TO 6 MOS	\$ 1,253,787	48.89%
7 TO 13 MOS	267,596	10.44%
14 TO 18 MOS	236,765	9.23%
19 TO 24 MOS	521,030	20.32%
25 TO 30 MOS	259,894	10.14%
31 TO 36 MOS	25,000	0.98%
<b>TOTAL</b>	<u>\$ 2,564,072</u>	<u>100.00%</u>

***Maturity Limits Are In Compliance With The Orange County Treasurer's Investment Policy Statement***

Floating Rate Notes are deemed to have a maturity date equal to their next interest reset date.  
 At October 31, 2008, Floating Rate Notes comprise 14.62% of the O.C. Extended Fund.

**ORANGE COUNTY TREASURER - TAX COLLECTOR  
JOHN WAYNE AIRPORT INVESTMENT POOL  
PORTFOLIO COMPOSITION \*\***

**October 31, 2008**



	In Thousands
CERTIFICATES OF DEPOSIT	\$ 2,000
COMMERCIAL PAPER	12,458
U.S. GOVERNMENT AGENCIES	39,925
MONEY MARKET FUNDS	3,608
<b>TOTAL</b>	<b><u>\$ 57,991</u></b>

*Investment Composition Is In Compliance With The Orange County Treasurer's Investment Policy Statement*

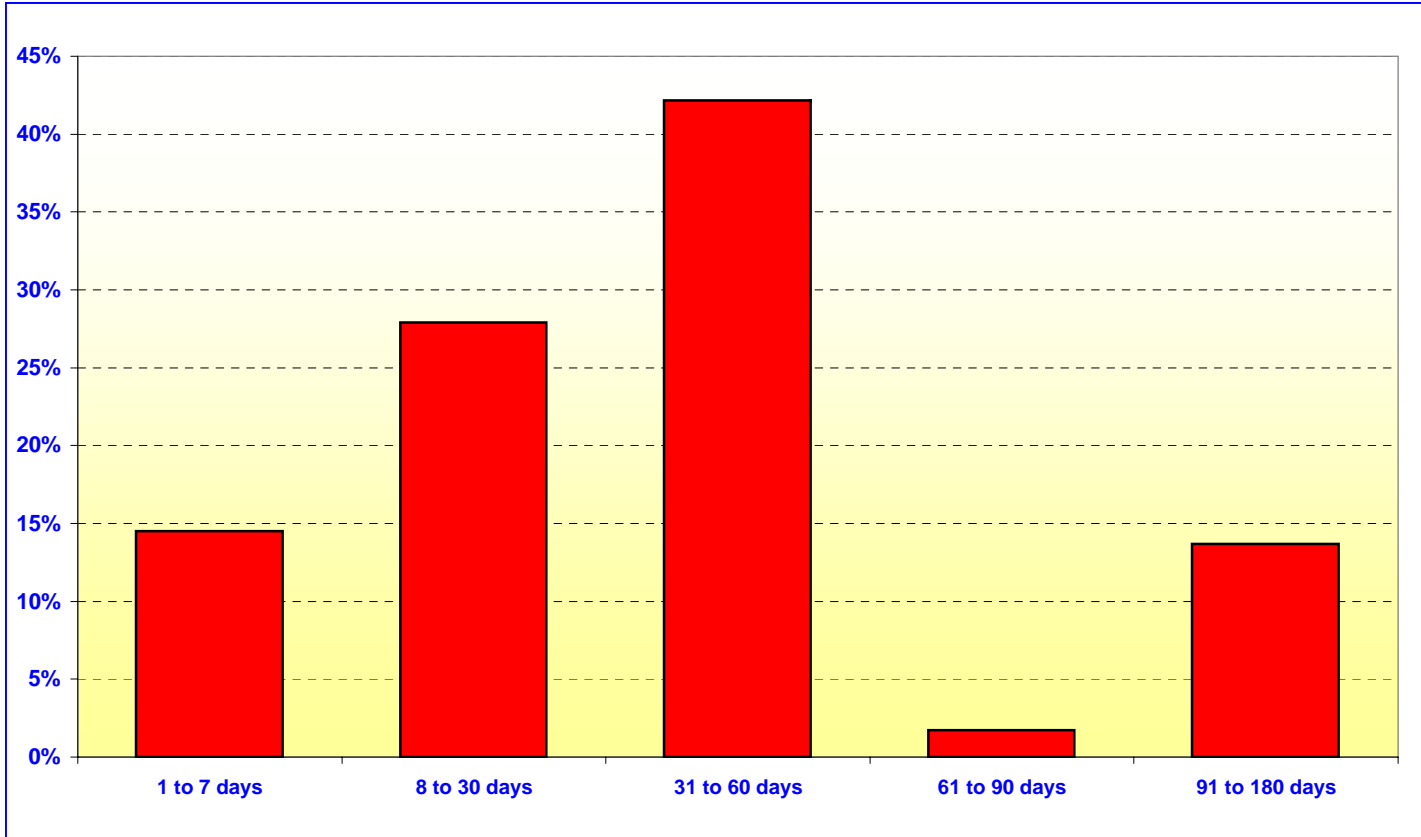
**\*\* Calculated Using Market Value at 10/31/2008**

**ORANGE COUNTY TREASURER - TAX COLLECTOR**

**JOHN WAYNE AIRPORT INVESTMENT POOL**

**MATURITIES DISTRIBUTION**

October 31, 2008



JOHN WAYNE AIRPORT		
	In Thousands	%
1 TO 7 DAYS	\$ 8,443	14.53%
8 TO 30 DAYS	16,208	27.89%
31 TO 60 DAYS	24,515	42.18%
61 TO 90 DAYS	1,000	1.72%
91 TO 180 DAYS	7,951	13.68%
181 TO 395 DAYS	-	-
<b>TOTAL</b>	<b>\$ 58,117</b>	<b>100.00%</b>

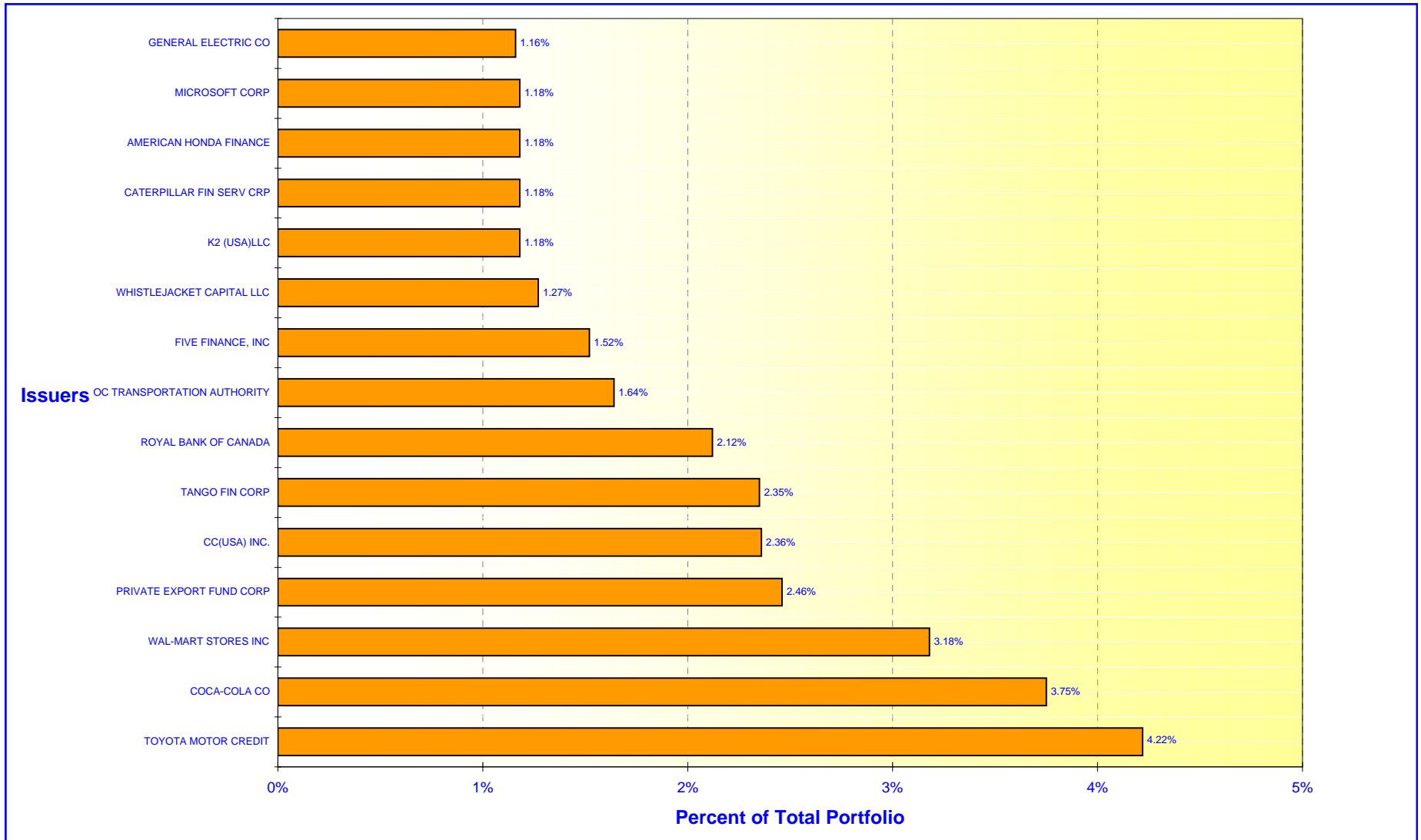
***Maturity Limits Are In Compliance With The Orange County Treasurer's Investment Policy Statement***

Floating Rate Notes are deemed to have a maturity date equal to their next interest reset date.  
 At October 31, 2008, Floating Rate Notes comprise 3.44% John Wayne Airport

# ORANGE COUNTY TREASURER - TAX COLLECTOR

## ORANGE COUNTY INVESTMENT POOL - ISSUER CONCENTRATION

October 31, 2008



Note: Commingled Investment Pool includes: Money Market Fund, Extended Fund, & Extended Fund B



# ORANGE COUNTY TREASURER - TAX COLLECTOR

## EDUCATIONAL INVESTMENT POOL - ISSUER CONCENTRATION

October 31, 2008

