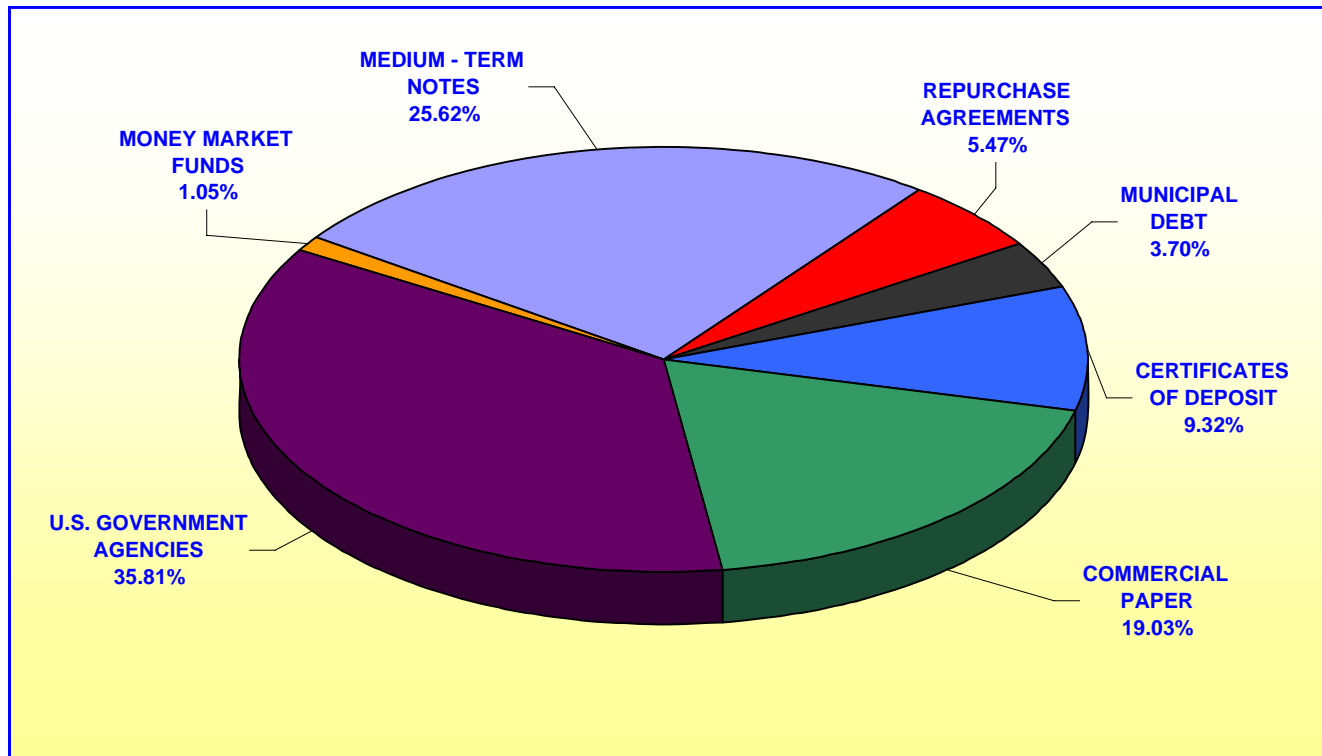


**ORANGE COUNTY TREASURER - TAX COLLECTOR  
ORANGE COUNTY INVESTMENT POOL  
PORTFOLIO COMPOSITION - COMBINED \*\***

**August 31, 2007**



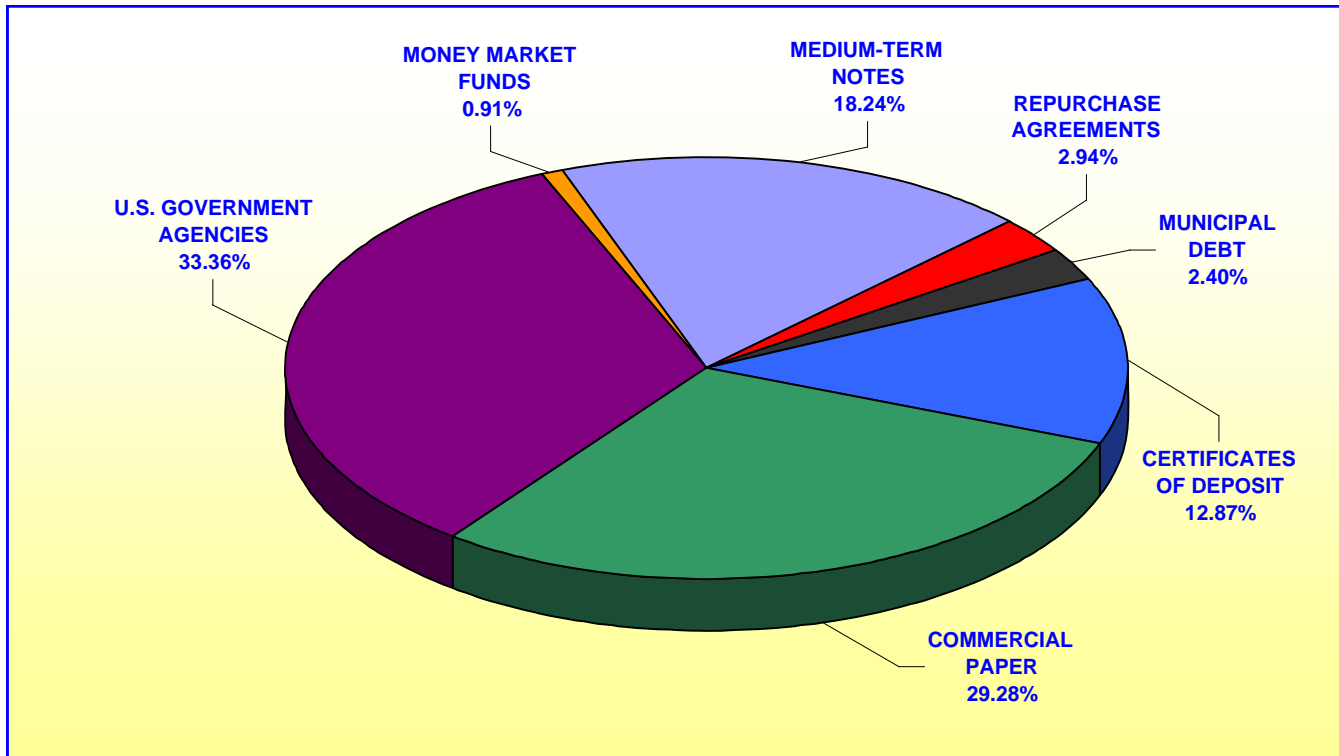
	In Thousands
CERTIFICATES OF DEPOSIT	\$ 280,957
COMMERCIAL PAPER	573,846
U.S. GOVERNMENT AGENCIES	1,079,568
MONEY MARKET FUNDS	31,690
MEDIUM-TERM NOTES	772,288
REPURCHASE AGREEMENTS	165,000
MUNICIPAL DEBT	<u>111,392</u>
<b>TOTAL</b>	<b><u><u>\$ 3,014,741</u></u></b>

*Investment Composition Is In Compliance With The Orange County Treasurer's Investment Policy Statement*

*\*\* Calculated Using Market Value at 08/31/2007*

**ORANGE COUNTY TREASURER - TAX COLLECTOR  
ORANGE COUNTY EDUCATIONAL INVESTMENT POOL  
PORTFOLIO COMPOSITION - COMBINED \*\***

August 31, 2007



		In Thousands
	CERTIFICATES OF DEPOSIT	\$ 371,930
	COMMERCIAL PAPER	846,110
	U.S. GOVERNMENT AGENCIES	963,966
	MONEY MARKET FUNDS	26,327
	MEDIUM-TERM NOTES	526,930
	REPURCHASE AGREEMENTS	85,000
	MUNICIPAL DEBT	69,462
	<b>TOTAL</b>	<b><u>\$ 2,889,725</u></b>

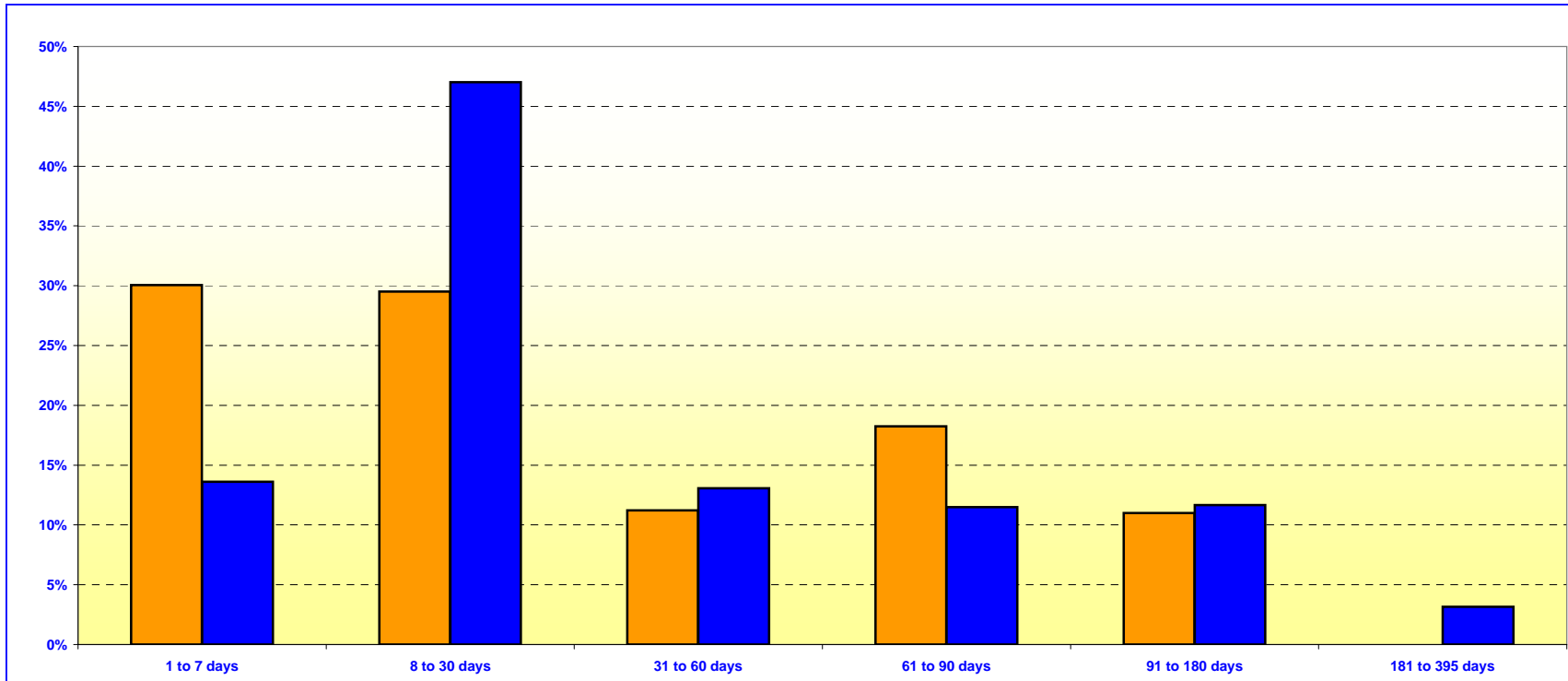
*Investment Composition Is In Compliance With The Orange County Treasurer's Investment Policy Statement*

\*\* Calculated Using Market Value at 08/31/2007

**ORANGE COUNTY TREASURER - TAX COLLECTOR**  
**ORANGE COUNTY MONEY MARKET FUND AND EDUCATIONAL MONEY MARKET FUND**

**MATURITIES DISTRIBUTION**

August 31, 2007



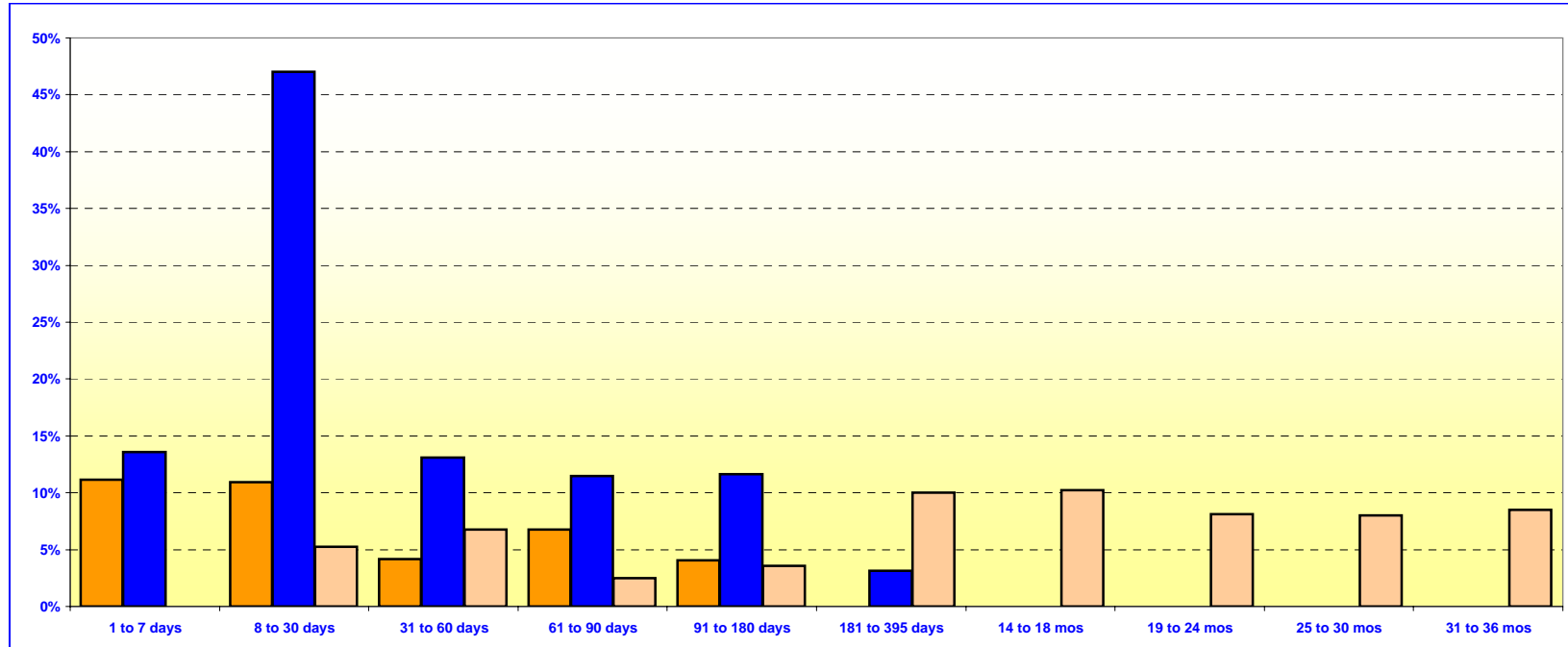
<b>O.C. INVESTMENT POOL MONEY MARKET FUND</b>			
	In Thousands	%	
1 TO 7 DAYS	\$ 453,041	30.04%	
8 TO 30 DAYS	445,000	29.51%	
31 TO 60 DAYS	169,155	11.22%	
61 TO 90 DAYS	274,945	18.23%	
91 TO 180 DAYS	165,850	11.00%	
181 TO 395 DAYS	-	0.00%	
<b>TOTAL</b>	<b>\$ 1,507,991</b>	<b>100.00%</b>	

<b>O.C. EDUCATIONAL MONEY MARKET FUND</b>			
	In Thousands	%	
1 TO 7 DAYS	\$ 250,763	13.60%	
8 TO 30 DAYS	867,076	47.03%	
31 TO 60 DAYS	241,000	13.07%	
61 TO 90 DAYS	212,000	11.50%	
91 TO 180 DAYS	215,000	11.66%	
181 TO 395 DAYS	58,000	3.14%	
<b>TOTAL</b>	<b>\$ 1,843,839</b>	<b>100.00%</b>	

***Maturity Limits Are In Compliance With The Orange County Treasurer's Investment Policy Statement***

Floating Rate Notes are deemed to have a maturity date equal to their next interest reset date.  
 At August 31, 2007 Floating Rate Notes comprise 13.91% and 6.13% of the O.C. Money Market Fund and Educational Money Market Fund respectively.

**ORANGE COUNTY TREASURER - TAX COLLECTOR**  
**ORANGE COUNTY AND EDUCATIONAL INVESTMENT POOLS**  
**MATURITIES DISTRIBUTION**  
**August 31, 2007**



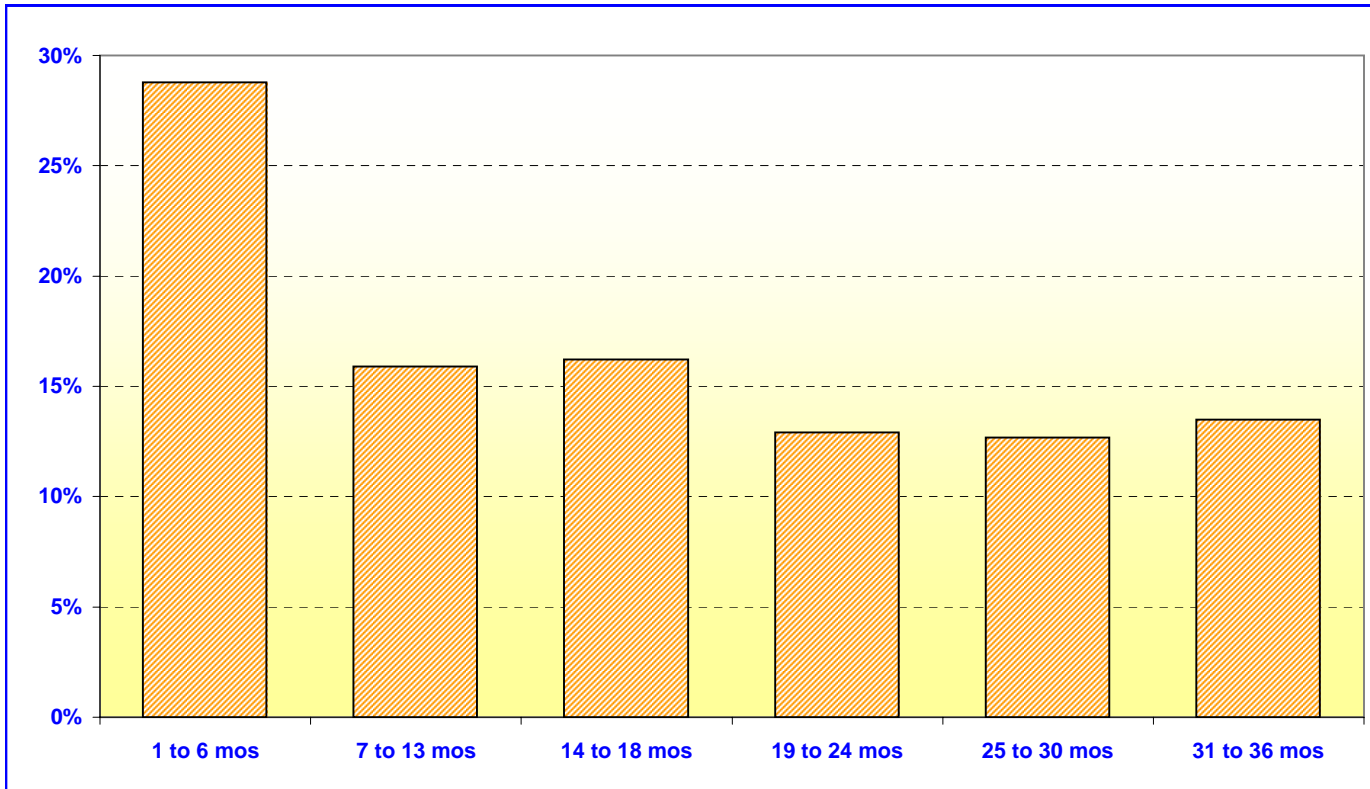
O.C. INVESTMENT POOL				
			In Thousands	%
	Money Market Fund	1 TO 7 DAYS	\$ 453,041	11.13%
	Money Market Fund	8 TO 30 DAYS	445,000	10.93%
	Money Market Fund	31 TO 60 DAYS	169,155	4.16%
	Money Market Fund	61 TO 90 DAYS	274,945	6.75%
	Money Market Fund	91 TO 180 DAYS	165,850	4.08%
	Money Market Fund	181 TO 395 DAYS	0	0.00%
	Extended Fund	1 TO 7 DAYS	0	0.00%
	Extended Fund	8 TO 30 DAYS	214,750	5.28%
	Extended Fund	31 TO 60 DAYS	275,775	6.77%
	Extended Fund	61 TO 90 DAYS	102,300	2.51%
	Extended Fund	91 TO 180 DAYS	144,930	3.56%
	Extended Fund	181 TO 395 DAYS	407,687	10.02%
	Extended Fund	14 TO 18 MONTHS	415,345	10.20%
	Extended Fund	19 TO 24 MONTHS	330,980	8.13%
	Extended Fund	25 TO 30 MONTHS	324,959	7.98%
	Extended Fund	31 TO 36 MONTHS	346,030	8.50%
	<b>TOTAL</b>		<b>\$ 4,070,747</b>	<b>100.00%</b>

O.C. EDUCATIONAL MONEY MARKET FUND		
	In Thousands	%
1 TO 7 DAYS	\$ 250,763	13.60%
8 TO 30 DAYS	867,076	47.03%
31 TO 60 DAYS	241,000	13.07%
61 TO 90 DAYS	212,000	11.50%
91 TO 180 DAYS	215,000	11.66%
181 TO 395 DAYS	58,000	3.14%
<b>TOTAL</b>	<b>\$ 1,843,839</b>	<b>100.00%</b>

**Maturity Limits Are In Compliance With The Orange County Treasurer's Investment Policy Statement**

Floating Rate Notes are deemed to have a maturity date equal to their next interest reset date.  
 At August 31, 2007, Floating Rate Notes comprise 12.30% and 6.13% of the O.C. Investment Pool and Educational Money Market Fund respectively.

**ORANGE COUNTY TREASURER - TAX COLLECTOR**  
**ORANGE COUNTY INVESTMENT POOL - EXTENDED FUND**  
**MATURITIES DISTRIBUTION**  
**August 31, 2007**



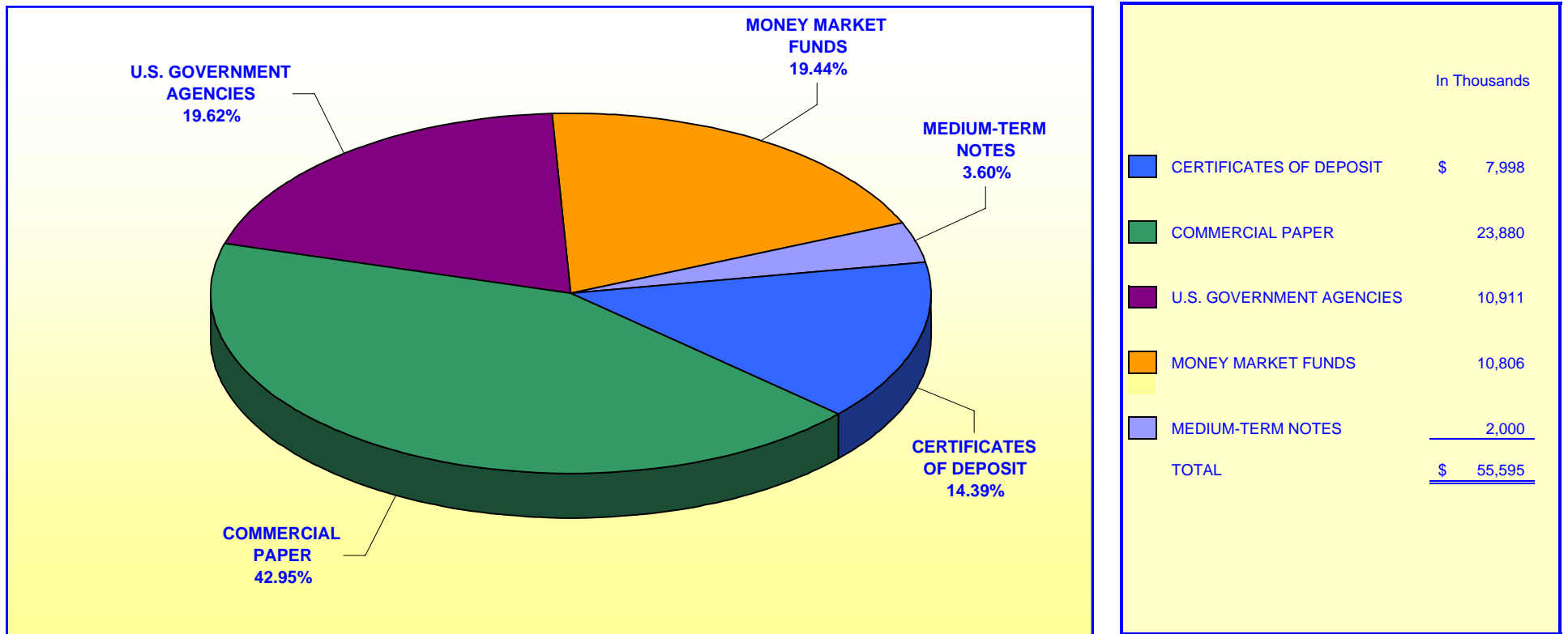
<b>O.C. INVESTMENT POOL EXTENDED FUND</b>		
	In Thousands	%
1 TO 6 MOS	\$ 737,755	28.79%
7 TO 13 MOS	407,687	15.91%
14 TO 18 MOS	415,345	16.21%
19 TO 24 MOS	330,980	12.91%
25 TO 30 MOS	324,959	12.68%
31 TO 36 MOS	<u>346,030</u>	<u>13.50%</u>
<b>TOTAL</b>	<u><b>\$ 2,562,756</b></u>	<u><b>100.00%</b></u>

***Maturity Limits Are In Compliance With The Orange County Treasurer's Investment Policy Statement***

Floating Rate Notes are deemed to have a maturity date equal to their next interest reset date.  
 At August 31, 2007, Floating Rate Notes comprise 11.36% of the O.C. Extended Fund.

**ORANGE COUNTY TREASURER - TAX COLLECTOR  
JOHN WAYNE AIRPORT INVESTMENT POOL  
PORTFOLIO COMPOSITION \*\***

**August 31, 2007**



*Investment Composition Is In Compliance With The Orange County Treasurer's Investment Policy Statement*

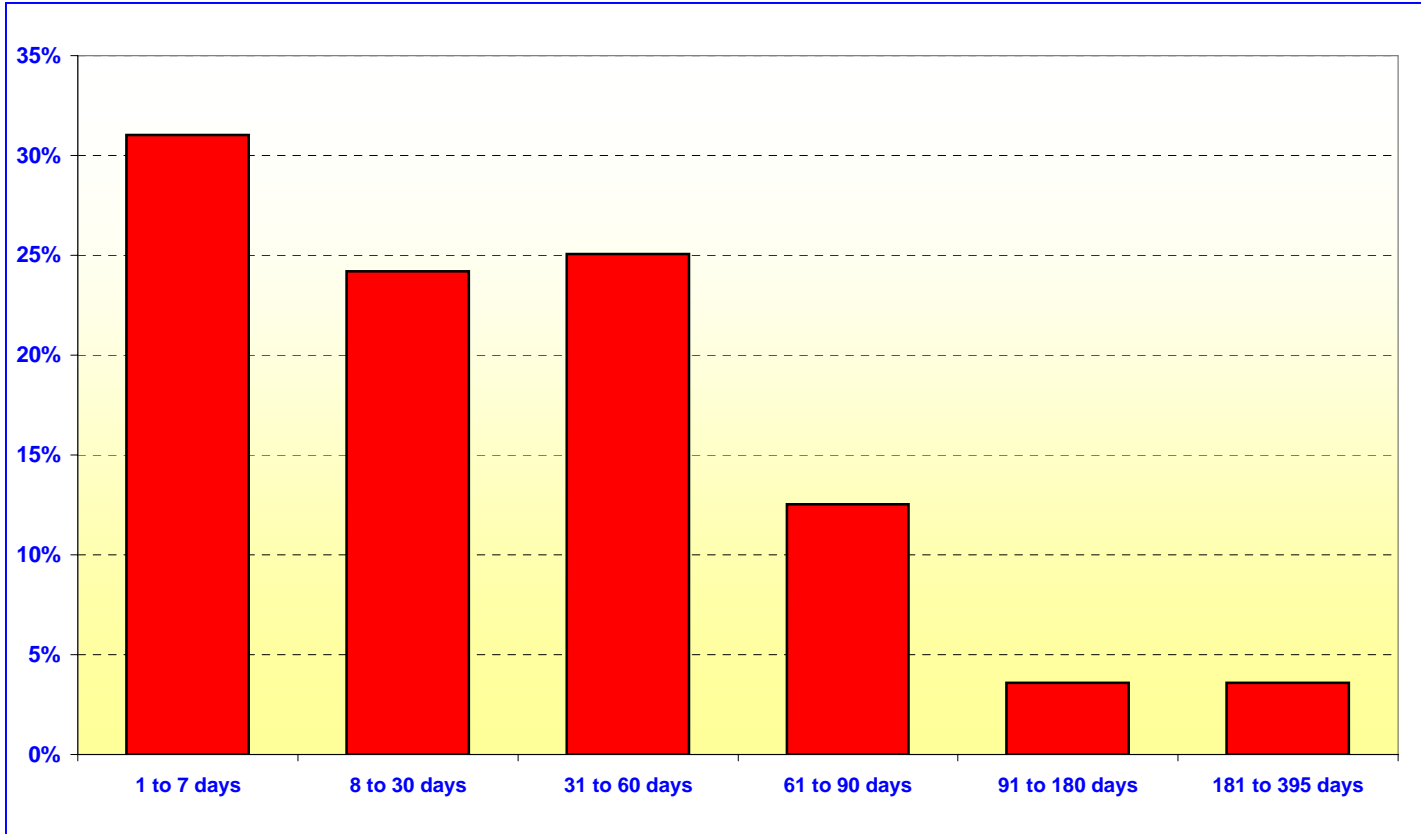
*\*\* Calculated Using Market Value at 08/31/07*

**ORANGE COUNTY TREASURER - TAX COLLECTOR**

**JOHN WAYNE AIRPORT INVESTMENT POOL**

**MATURITIES DISTRIBUTION**

August 31, 2007



JOHN WAYNE AIRPORT		
	In Thousands	%
1 TO 7 DAYS	\$ 17,306	31.02%
8 TO 30 DAYS	13,500	24.20%
31 TO 60 DAYS	13,988	25.07%
61 TO 90 DAYS	7,000	12.55%
91 TO 180 DAYS	2,000	3.58%
181 TO 395 DAYS	<u>2,000</u>	<u>3.58%</u>
<b>TOTAL</b>	<b><u>\$ 55,794</u></b>	<b><u>100.00%</u></b>

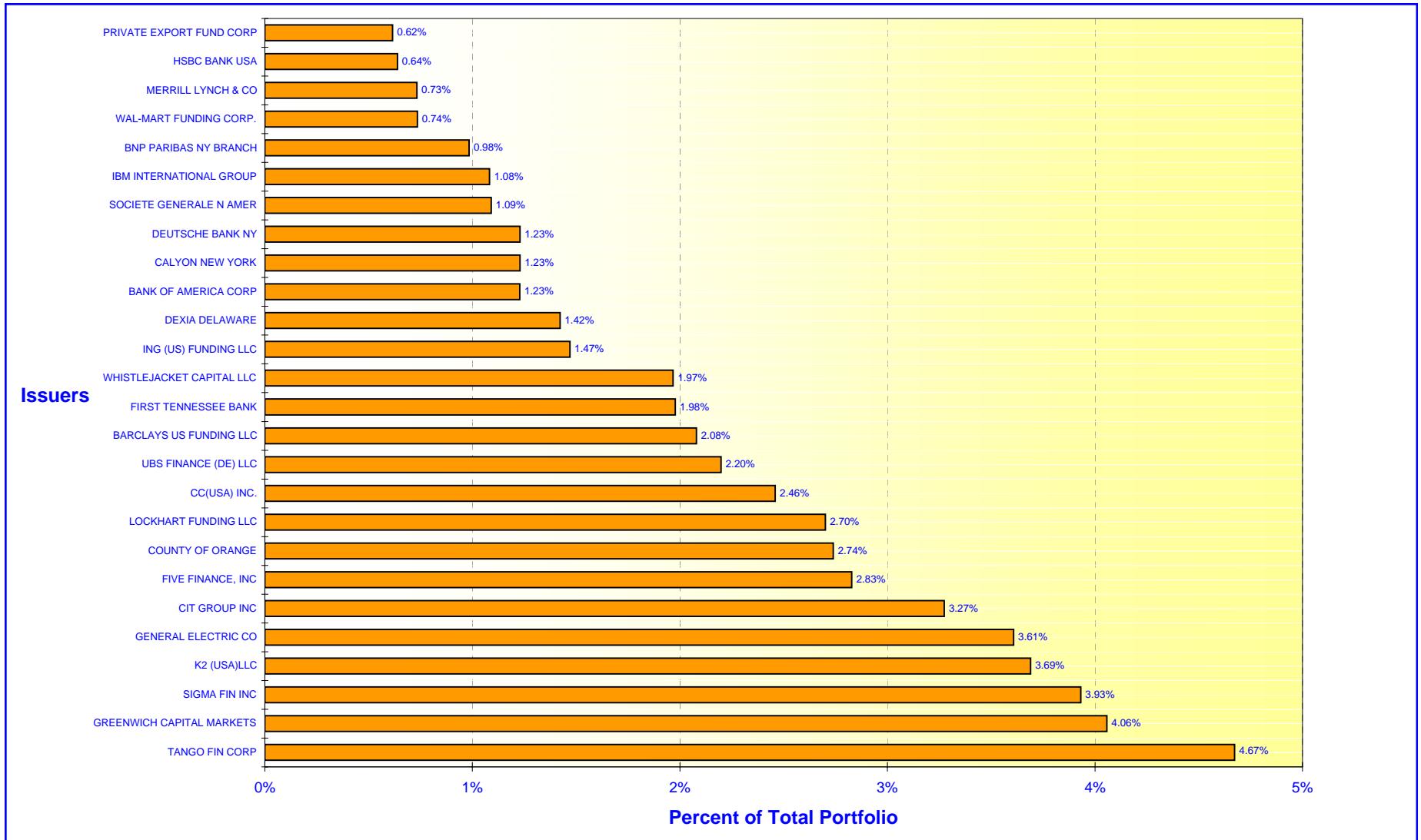
***Maturity Limits Are In Compliance With The Orange County Treasurer's Investment Policy Statement***

Floating Rate Notes are deemed to have a maturity date equal to their next interest reset date.  
 At August 31, 2007, Floating Rate Notes comprise 3.58% John Wayne Airport

# ORANGE COUNTY TREASURER - TAX COLLECTOR

## ORANGE COUNTY INVESTMENT POOL - ISSUER CONCENTRATION

August 31, 2007





# ORANGE COUNTY TREASURER - TAX COLLECTOR

## EDUCATIONAL INVESTMENT POOL - ISSUER CONCENTRATION

August 31, 2007

